



賦稅署

Taxation Administration

Yearbook of Taxation, Republic of China  
2019



## Contents

|  |    |
|--|----|
| <b>Major Improvements in Taxation in 2019</b> .....  | 1  |
| <b>PART I Organization of the Tax Administration</b> .....   | 7  |
| I Organization of the Tax Administration .....   | 9  |
| II Organization & Functions .....  | 10 |
| III Personnel in Taxation Authority .....  | 12 |
| <b>PART II Structure of Tax</b> .....  | 19 |
| <b>PART III Overview of Tax Revenue (for past 10 years)</b> .....  | 23 |
| I Overview of taxation.....  | 25 |
| II Proportion of Taxes in National Tax Revenue .....   | 27 |
| III Statistics of National Tax Revenue by Tax Items over the years.....  | 29 |
| IV Tax Revenues of Municipality, County, and City over the years.....  | 31 |
| V The proportion of direct and indirect taxes for past 10 years.....   | 33 |
| <b>PART IV Overview of Internal Revenue Tax<br/>Collection in 2019</b> .....                                   | 35 |
| I Comparison of tax revenues, budgets, and tax revenues in last year.....                                      | 37 |
| II Comparison of tax revenues, budgets, and tax revenues in last year of tax collection<br>agencies .....      | 40 |
| III Comparison of the proportion of various taxes to internal revenue taxes .....                              | 43 |
| <b>PART V Analysis of Tax Burden in Taiwan and Comparison with<br/>Other Countries</b> .....                   | 45 |
| I Changes in tax revenue to gross domestic production and tax revenue to net expenditure of<br>government..... | 47 |
| II Per Capita Tax Burden and Per Capita National Income.....   | 48 |
| III Comparison of national tax burden and other countries.....   | 49 |
| <b>PART VI Analysis of Tax Sources</b> .....   | 51 |
| I Income Tax.....  | 53 |
| II Commodity Tax .....   | 59 |
| III Tobacco and Alcohol Tax .....  | 60 |
| IV Business Tax .....  | 61 |

## Contents

|  |           |
|--|-----------|
| V Stamp Tax .....                                    | 65        |
| VI Land Tax .....                                    | 66        |
| VII House Tax .....                                  | 69        |
| VIII Deed Tax .....                                  | 70        |
| IX Estate Tax .....                                  | 71        |
| X Gift Tax .....                                     | 72        |
| XI Amusement Tax .....                               | 73        |
| XII Vehicle License Tax .....                        | 74        |
| XIII Securities Transaction Tax .....                | 75        |
| XIV Futures Transaction Tax .....                    | 76        |
| XV Specifically Selected Goods and Services Tax..... | 77        |
| <b>PART VII Milestones.....</b>                      | <b>79</b> |

## **Major Improvements in Taxation in 2019**

### **1. To Improve the Tax System and Achieve Fairness and Equality of Taxation**

- (1) The amendments to Articles 11-1 and 12-6 of the “Commodity Tax Act” were promulgated on June 13, 2019. From June 15, 2019 to June 14, 2021, the commodity tax on new refrigerators, air conditioners, and dehumidifiers which are classified as first- or second-grade at the MOEA energy-efficient levels shall be reduced by the maximum amount of NT\$2,000; From August 18, 2017 to December 31, 2022, a person who scraps his/her large-sized vehicles which are classified as first-, second-, or third- period of the environmental standards and purchases one of the aforementioned new vehicles, shall be eligible to have the commodity tax on the new vehicle reduced by the maximum amount of NT\$400,000, to encourage green consumption and replace old with new large-sized vehicles quickly.
- (2) The amendments to Articles 14 and 126 of the “Income Tax Act” were promulgated on July 24, 2019. From January 1, 2019, the taxpayer can choose either a special deduction or an itemized deduction to calculate his/her wage income. Wage earners can choose the best option regardless of their industry category; “Regulations Governing Scope and Identification of Allowable Deductions of Necessary Expenses from Individual Salary and Wages” was promulgated on November 8, 2019 to facilitate the compliance by both taxpayers and tax authorities.
- (3) The amendment to Article 17 of the “Income Tax Act” was promulgated on July 24, 2019. From January 1, 2019, the taxpayer, his/her spouse, or any dependent who has a physical or mental disability and requires long-term care services as announced by the Ministry of Health and Welfare, is entitled to the special deduction of NT\$120,000 for long-term care per person per year, so as to relieve the tax burden on middle- and low-income households and allow government resources to be used more efficiently.
- (4) The “Management, Utilization, and Taxation of Repatriated Offshore Funds Act” was enacted and promulgated on July 24, 2019 and became effective as of August 15, 2019, stipulating where individuals and enterprises may repatriate

offshore funds within 2 years from the enforcement of the Act and deposit them into a segregated account for management and investment in accordance with regulations, they may then be taxed at specific tax rates under the Act and shall be excluded from general income tax laws, so as to assist ROC businesses in adjusting their global investment framework and operations, encourage them to invest in their home country, and promote domestic economic developments.

- (5) The amendment to Article 12 of the “Commodity Tax Act” was promulgated on December 25, 2019. Low chassis buses, gas buses, hybrid oil and electric buses, electric buses, and rehabilitation buses for the disabled which were purchased for accessible transportation use shall be exempted from commodity tax until December 31, 2024. Mobile shower car for exclusive sanitary purposes are classified as special purpose vehicles, which are exempt from commodity tax. This amendment will promote quality of long-term care services.
- (6) The amendments to the “Regulations Governing Application of Investment Credit to Private Participation in Transportation Infrastructure Projects” were promulgated on April 8, 2019, adding the construction or operation into different phase be allowed to be eligible for tax benefit in every phase to encourage private participation in infrastructure and improve tax laws and regulations.
- (7) In order to lower the punishment for violators who don't understand the Tobacco and Alcohol Tax regulations and in response to the promulgation of amendments of the “Income Tax Act” on February 7, 2018 as a package of income tax reform, the amendments of “The Standards for the Exemption of Penalties for Inappropriate Actions in Taxation Affairs” were promulgated on May 23, 2019.
- (8) To complement the “Management, Utilization, and Taxation of Repatriated Offshore Funds Act” promulgated on July 24, 2019, the “Regulations Governing the Management, Utilization, and Taxation of Repatriated Offshore Funds” was enacted and promulgated on August 15, 2019 to detail the procedures for the application of offshore funds repatriated by individuals and profit-seeking enterprises as well as the management, utilization, and related manners of tax refund and repayment to such funds, so as to facilitate compliance by both the taxpayers and the tax authorities and the implementation of the Act.

- (9) The amendments to the “Standards of Withholding Rates for Various Incomes” were promulgated on September 20, 2019 and became effective as of December 1, 2019, which stipulates that the tax-free threshold on prize money from lottery tickets under the auspices of the government is raised from NT\$2,000 to NT\$5,000, to simplify the procedures of withholding tax on prize money from such lottery tickets, and to encourage people to purchase such lottery tickets for public welfare and ask for uniform invoice during purchase.
- (10) The amendments to the “Regulations Governing the Application of Investment Tax Credits to Urban Renewal Entities in the Form of a Company Limited by Shares Participating in the Renewal Projects of Urban Areas” were promulgated on October 28, 2019, amending its name as “Regulations Governing the Application of Investment Credit to Urban Renewal Entities and Assistant Implementers in the Form of a Company Limited by Shares Participating in the Renewal Projects of Urban Areas”, and adding regulations governing the procedure, documents and other related matters for assistant implementers to be eligible to the tax benefit. It would facilitate the compliance by both taxpayers and tax authorities.
- (11) The amendment to Article 3-2 of “The Standards for the Exemption of Penalties for Inappropriate Actions in Taxation Affairs” was promulgated on November 12, 2019, giving individuals a reduction of 50% punishment for violation of a duty where he/she has failed to file the house and land income tax return within the prescribed period of time for the first time since the implementation of Integrated Housing and Land Taxation, so as to conform to the principle of proportionality.
- (12) To comply with the amendments to the “Statute for Industrial Innovation” promulgated on July 24, 2019, the amendments to the “Regulations Governing Income Computation and Filing of Tax Incentives for Venture Capital Businesses of Limited Partnership” were promulgated on December 24, 2019 to facilitate the compliance by both taxpayers and tax authorities.
- (13) The amendments to “The Guidelines for the Taxpayer Rights Protection Ombudsmen Dealing with Taxpayer Rights Protection Matters” were promulgated on February 18, 2019, adding cases where taxpayer rights protection ombudsmen should recuse themselves from administrative procedures, strengthening the neutrality and objectivity of the taxpayer rights

protection ombudsmen.

- (14) The amendments to Articles 9, 10, and 12 of the “Directions on Investigation Procedures of the Tax Collection Authorities” were promulgated on May 23, 2019, stipulating that the tax collection authorities may conduct video or audio recording during the investigation process.
- (15) An explanation of Article 48-1 of the “Tax Collection Act” which stipulates the recognition directions governing operation procedures and reference date of investigation was enacted and promulgated on July 12, 2019.

## **2. To Reform the Tax Administration and Carry Out Simplified and Convenient Services**

- (1) From January 1, 2019, vehicles owned and used by mentally or physically disabled persons are exempted from vehicle license tax without an application.
- (2) The amendments to “The Regulations Governing the Accounting Books and Vouchers of Profit-Seeking Enterprises Managed by the Competent Tax Authorities” were promulgated on January 11, 2019. This states that profit-seeking enterprises processing accounting data electronically may provide account books and related documents of evidence in the data storage medium for their local collection authority to investigate to achieve simple administration and convenient services.
- (3) From May 1, 2019, if gift tax declaration cases meet certain conditions, taxpayers may file their gift tax returns with a nearby tax authority and obtain certificates issued by the tax authority as having received the gift tax returns.
- (4) The amendment to Article 32 of the “Regulations Governing the Use of Uniform Invoices” was promulgated on May 24, 2019, and the termination date of Computer Uniform Invoices has been postponed from January 1, 2020 to January 1, 2021 so as to reduce business entities’ compliance costs.
- (5) A rule regarding the electronic operation of tax payment (exemption) certificates for domestic manufactured commodities was stipulated on June 3, 2019 to save paper, reduce manual work and reduce storage costs. The Motor Vehicle Offices can now review vehicle registration by using e-transmission of factory tax payment data to promote administrative efficiency.

- (6) In order to enhance simplified and convenient services, and promote the quality of tax service for administrative efficiency, from July 1, 2019, the platform service for non-residents' designated tax service agent or custodian institution to check and download withholding tax statement information online was put into practice.
- (7) The amendments to Articles 4 and 5 of the "Directions for Small Business Entities which Accept Mobile Payment to Apply for Tax Incentive Measures" were promulgated on August 16, 2019. The deadline for small business entities which accept mobile payment to apply for tax incentive measures has been extended from December 31, 2020 to December 31, 2025 so as to promote the willingness of small business entities to accept mobile payment.
- (8) The amendments to Paragraph 15-1 of the "Guidelines for the Determination of Sources of Income in the Republic of China According to Article 8 of the Income Tax Act" and the "Directions for Foreign Profit-Seeking Enterprises Applying for Issuance of Assessment Permission of Applicable Net Profit Ratio and Domestic Profit Contribution Ratio for Calculation of Income from Sources in the Republic of China" were promulgated on September 26, 2019. Both reduce the backlog of funds for foreign profit-seeking enterprises due to overpayment of withholding taxes and reduce the burden on both taxpayers and the tax authorities, as well as establish a simple and convenient income taxation mechanism for cross-border transactions.
- (9) From December 1, 2019, if estate tax declaration cases meet certain conditions, taxpayers may file their estate tax returns with a nearby tax authority and obtain certificates issued by the tax authority as having received the estate tax returns.
- (10) On December 20, 2019, the "The Guidelines for Electronic-filing of Amusement Tax Return" was amended, and multiple tax payment methods for applicants were added. In addition, the automatic payment system was interfaced with the box office information system of the Ministry of Culture. Along with the taxpayer disclosure of important matters, these measures simplified administrative procedures and protect the interest of taxpayers.
- (11) In order to improve the convenience for filing withholding statements, from January 1, 2017, the tax withholder who pays withholding income to non-residents and has paid the withholding tax can file the withholding tax

statement via the internet during the statutory filing period. The number of withholding tax statements of non-residents filing via the internet was 3.22 million in 2019, which was 90.98% of the total filed withholding tax statements of non-residents.

- (12) In order to encourage the willingness of consumers to ask for receipts when purchasing goods and to further urge manufacturers to issue uniform-invoices and pay tax honestly, it was promulgated that starting from the January-February 2019 issuance and for all following issuances, for each draw, there is 1 special prize, 1 grand prize, and 3 first to sixth prizes. The cloud invoice award included 15 sets of winning numbers for the NT\$1 million prize and 15,000 sets of winning numbers for the NT\$2,000 prize. Furthermore, there were 2 sets of winning numbers for the additional sixth prize for the months of January-August and 3 sets of winning numbers for the additional sixth prize and 400,000 sets of winning numbers for the NT\$500 cloud invoice award prize for the months of September-December for each draw.

## PART I Organization of the Tax Administration



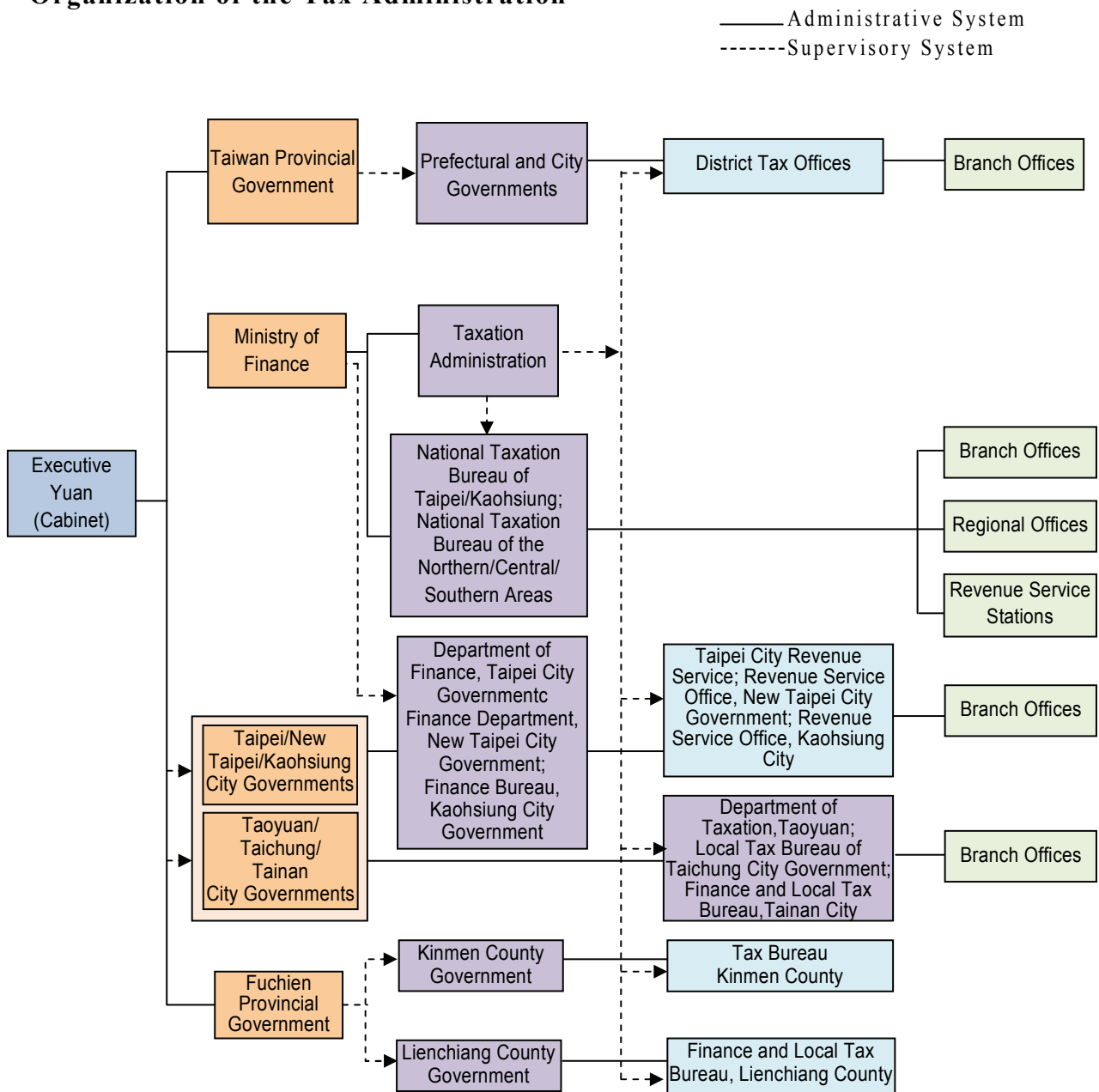
# I Organization of the Tax Administration

The Ministry of Finance (hereinafter MOF), subordinated to the Executive Yuan, is the highest administrative organ of taxation. Under the MOF, there is the Taxation Administration, which is in charge of drafting, enacting, and interpreting inland codes (for taxes other than customs duties), as well as overseeing the levy and collection of inland taxes.

There are five national taxation bureaus under the MOF, and in accordance with the restructuring of the Executive Yuan, the names of the five national taxation bureaus are changed to the National Taxation Bureau of Taipei, the National Taxation Bureau of Kaohsiung, the National Bureau of the Northern Area, the National Bureau of the Central Area, and the National Taxation of the Southern Area, all of which are in charge of the collection of national taxes.

County (or city) governments all have their own tax offices in charge of the collection of county and city taxes, respectively.

## Organization of the Tax Administration

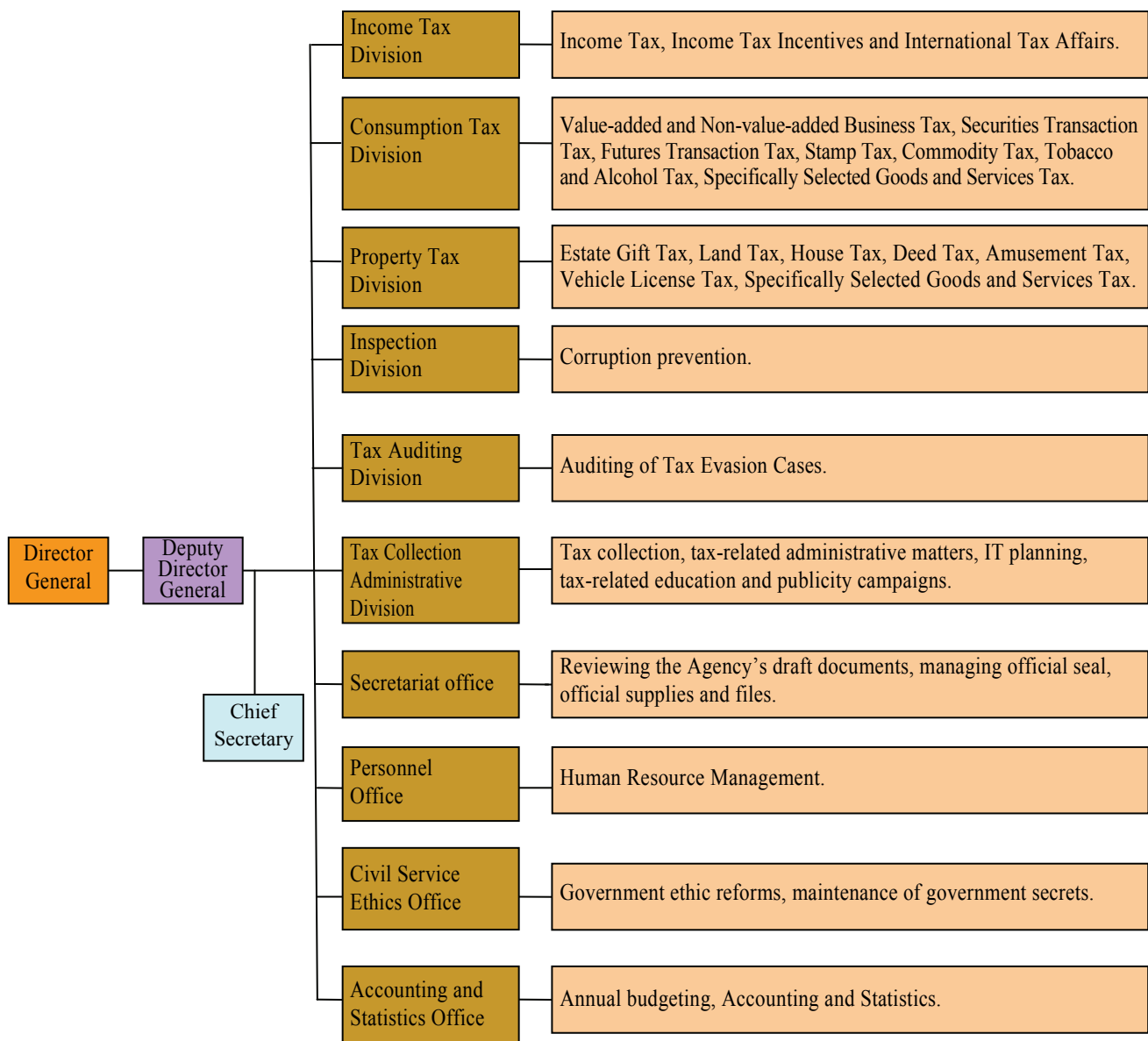


## II Organization & Functions

The Taxation Administration is an administrative authority directly subordinate to the Ministry of Finance. From the top down, there are one Director General, two Deputies, and one Chief Secretary. There are also six divisions and four offices. Each division has one Director and Deputy Director, and one chief officer heads the Personnel Office, the Civil Service Ethics Office, and the Accounting and Statistics Office, respectively. Within each division and secretariat are several sections taking charge of different tasks.

Major responsibilities include drafting, revision, and interpretation of inland tax regulations; planning, directing, supervising, and evaluating the levy and collection of national tax administrations and local tax administrations; directing, supervising, and evaluating the anti-corruption efforts of all levels of tax administration; auditing of major tax evasion cases, and supervising and evaluating the audit performance of all levels of tax administration; planning and evaluating matters relating to tax administration and tax information; and promoting tax-related education and publicity campaigns.

Below is a chart of organization and responsibilities as written above:



### Head of division in Taxation Administration

| Job Title   | Name             | Date Began Office |
|---|------------------|-------------------|
| Director-General                                      | Hsu , Tzu-Mei    | July 2020         |
| Deputy Director-General                               | Lou, Mei-Chung   | July 2020         |
| Deputy Director-General                               | Lee, I-Hui       | February 2019     |
| Chief Secretary                                       | Liang, Chen-Yu   | September 2020    |
| Director<br>Income Tax Division                       | Ni, Li-Hsin      | December 2017     |
| Director<br>Consumption Tax Division                  | Lee, Ching-Chung | December 2017     |
| Director<br>Property Tax Division                     | Chen, Man-Huang  | September 2020    |
| Director<br>Inspection Division                       | Cheng, Kuo-Ming  | March 2020        |
| Director<br>Tax Auditing Division                     | Wu, Wen-Lung     | January 2020      |
| Director<br>Tax Collection<br>Administrative Division | Hsieh, Hui-Mei   | February 2019     |
| Chief<br>Secretariat Office                           | Chang, Chen-Kuen | June 2015         |
| Chief<br>Personnel Office                             | Tsai, Ping-Yao   | March 2019        |
| Chief<br>Civil Service Ethics Office                  | Fan, I-Kai       | July 2020         |
| Chief<br>Accounting and Statistics Office             | Ko, Hui-Ping     | September 2019    |

### III Personnel in Taxation Authority

#### 1. Staff numbers and categories in Taxation Authority

There were 11,687 staff members in the Taxation Administration and taxation authorities by the end of year 2019. Staff numbers and categories are shown in the table and chart.

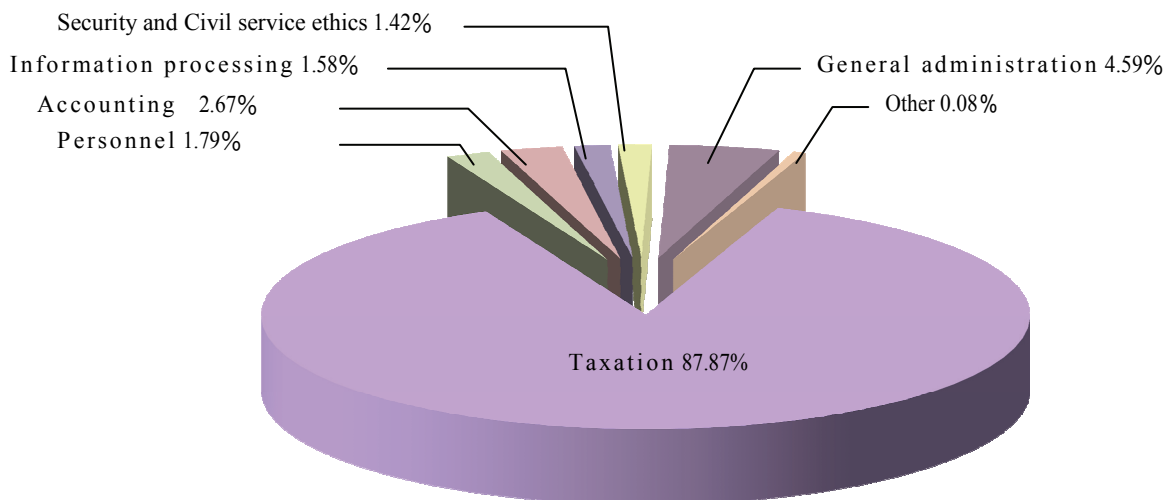
#### Staff numbers and categories in Taxation Authority

Unit: Person

| Functions & Duties                | Nationwide |         |
|-----------------------------------|------------|---------|
|                                   | Number     | Ratio   |
| Taxation                          | 10,269     | 87.87%  |
| Personnel                         | 209        | 1.79%   |
| Accounting                        | 312        | 2.67%   |
| Information processing            | 185        | 1.58%   |
| Security and Civil service ethics | 166        | 1.42%   |
| General administration            | 536        | 4.59%   |
| Other                             | 10         | 0.08%   |
| Total                             | 11,687     | 100.00% |

#### Pie chart of staff numbers and categories in Taxation Authority

Total 100%



## 2. Gender and age of taxation officers

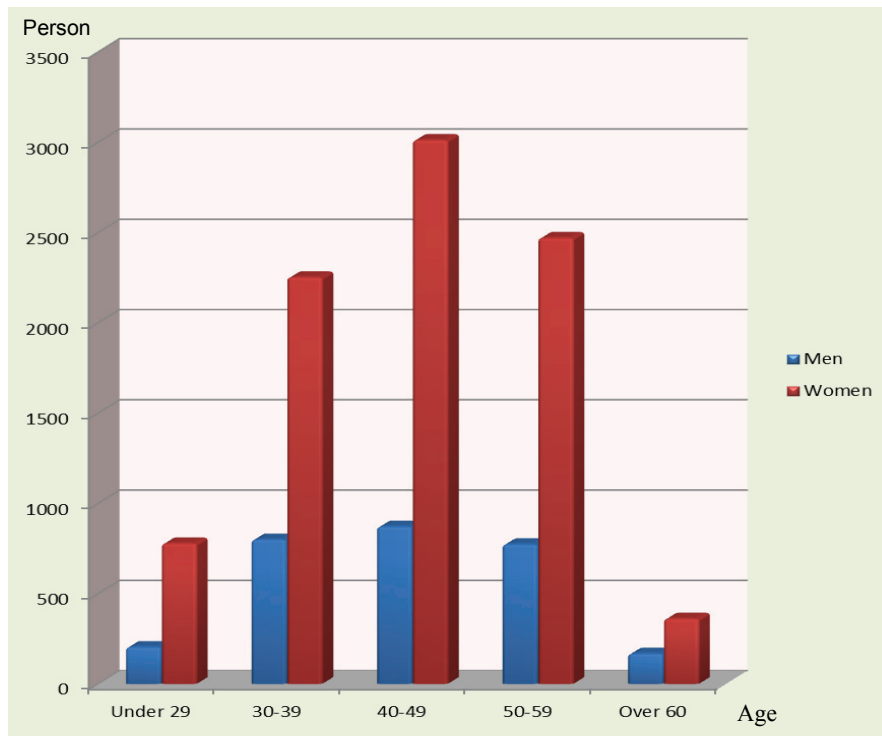
Most taxation officers are young adults. The ratio of the age of taxation officers under 39 years old is 34.51%. The ratios of men and women are 24% and 76%.

### Gender and age of taxation officers in 2019

Unit: Person

| Class interval (Age) | Nationwide    |                 |          | Ratio  |
|----------------------|---------------|-----------------|----------|--------|
|                      | Number of Men | Number of Women | Subtotal |        |
| Under 29             | 204           | 778             | 982      | 8.40%  |
| 30-39                | 799           | 2,252           | 3,051    | 26.11% |
| 40-49                | 871           | 3,012           | 3,883    | 33.22% |
| 50-59                | 773           | 2,470           | 3,243    | 27.75% |
| Over 60              | 167           | 361             | 528      | 4.52%  |
| Total                | 2,814         | 8,873           | 11,687   | 100%   |

### Bar graph of gender and age of taxation officers in 2019



### 3. Education level of taxation officers

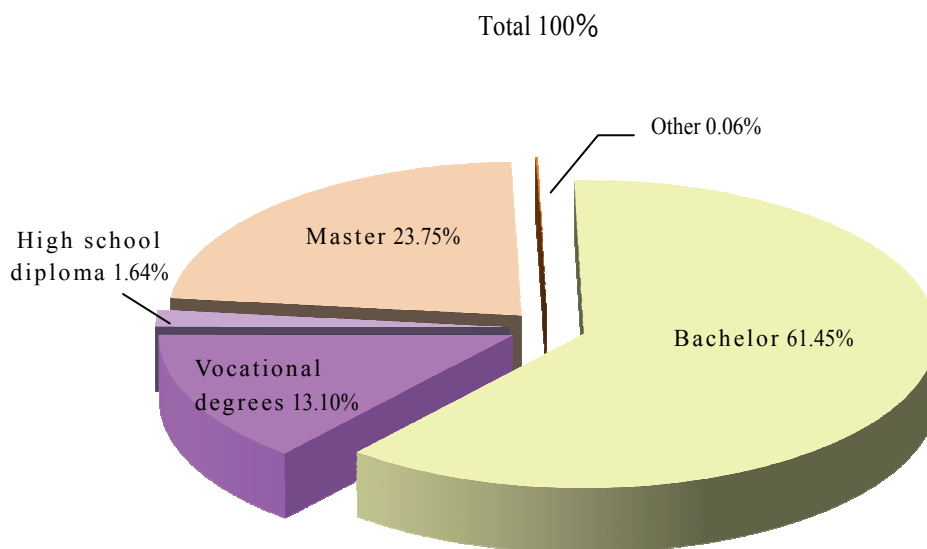
The ratio of taxation officers who have vocational degrees or above is 98.3%. As for the examination level, the ratio of taxation officers who passed the senior civil service examination or above is 77.53%.

#### Education level of taxation officers

Unit: Person

| Education           | Number | Ratio   |
|---------------------|--------|---------|
| Master              | 2,776  | 23.75%  |
| Bachelor            | 7,182  | 61.45%  |
| Vocational degrees  | 1,531  | 13.10%  |
| High school diploma | 191    | 1.64%   |
| Other               | 7      | 0.06%   |
| Total               | 11,687 | 100.00% |

#### Pie chart of education level of taxation officers



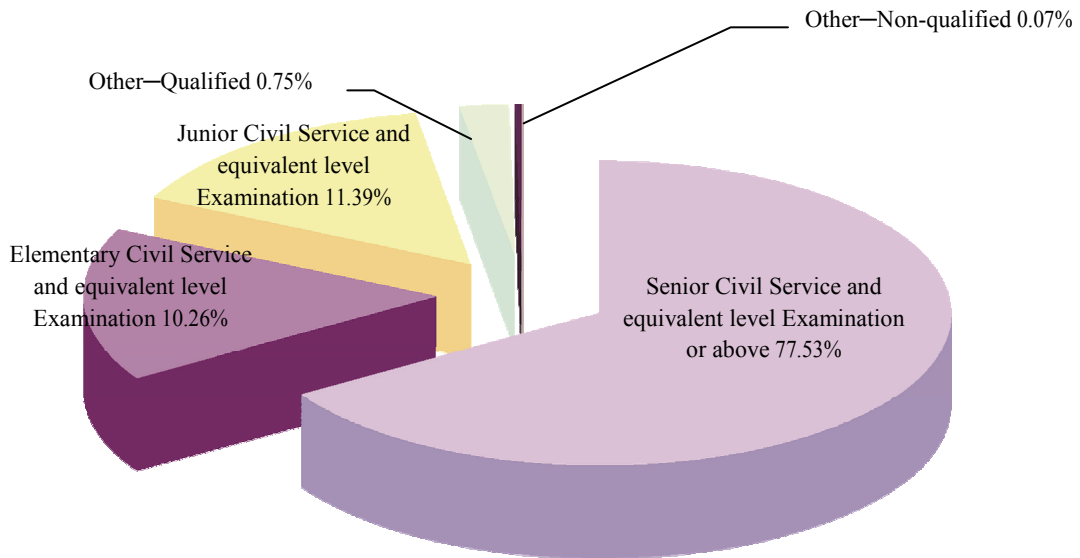
### Examination taken by taxation officers

Unit: Person

| Examination Level  | Nationwide |         |
|--|------------|---------|
|  | Number     | Ratio   |
| Senior Civil Service and equivalent level Examination or above | 9,061      | 77.53%  |
| Junior Civil Service and equivalent level Examination          | 1,331      | 11.39%  |
| Elementary Civil Service and equivalent level Examination      | 1,199      | 10.26%  |
| Other—Qualified  | 88         | 0.75%   |
| Other—Non-qualified  | 8          | 0.07%   |
| Total  | 11,687     | 100.00% |

### Pie chart of examination level of taxation officers

Total 100%



#### 4. Director-Generals in Taxation Administration in chronological Order

The Director-Generals in the Taxation Administration since the relocation of the government in Taiwan are shown as in the table. The data before the relocation of the government have been lost.

**Director-Generals in Taxation Administration**

| Name              | Date Began Office | Date Left Office |
|-------------------|-------------------|------------------|
| Chen, Tsung       | May 1950          | March 1961       |
| Chen, Shao-Shu    | March 1961        | July 1969        |
| Jin, Wei-Shen     | July 1969         | December 1981    |
| Shiue, Jia-Chuan  | December 1981     | December 1986    |
| Chang, Yao-Tung   | December 1986     | April 1988       |
| Wang, Jeng-Yi     | April 1988        | July 1991        |
| Hou, Ba-Lieh      | July 1991         | March 1994       |
| Lin, Jian-Syong   | March 1994        | January 1997     |
| Wang, De-Shan     | January 1997      | June 2000        |
| Lin, Tzeng-Ji     | June 2000         | August 2004      |
| Lin, Ji-Chang     | August 2004       | August 2006      |
| Chang, Sheng-Ford | August 2006       | July 2007        |
| Sheu, Yu-Jer      | August 2007       | December 2012    |
| Wu, Tzu-Hsin      | January 2013      | June 2016        |
| Lee, Ching-Hua    | June 2016         | June 2020        |
| Hsu, Tzu-Mei      | July 2020         |                  |

## 5. Directors of Taxation Authority

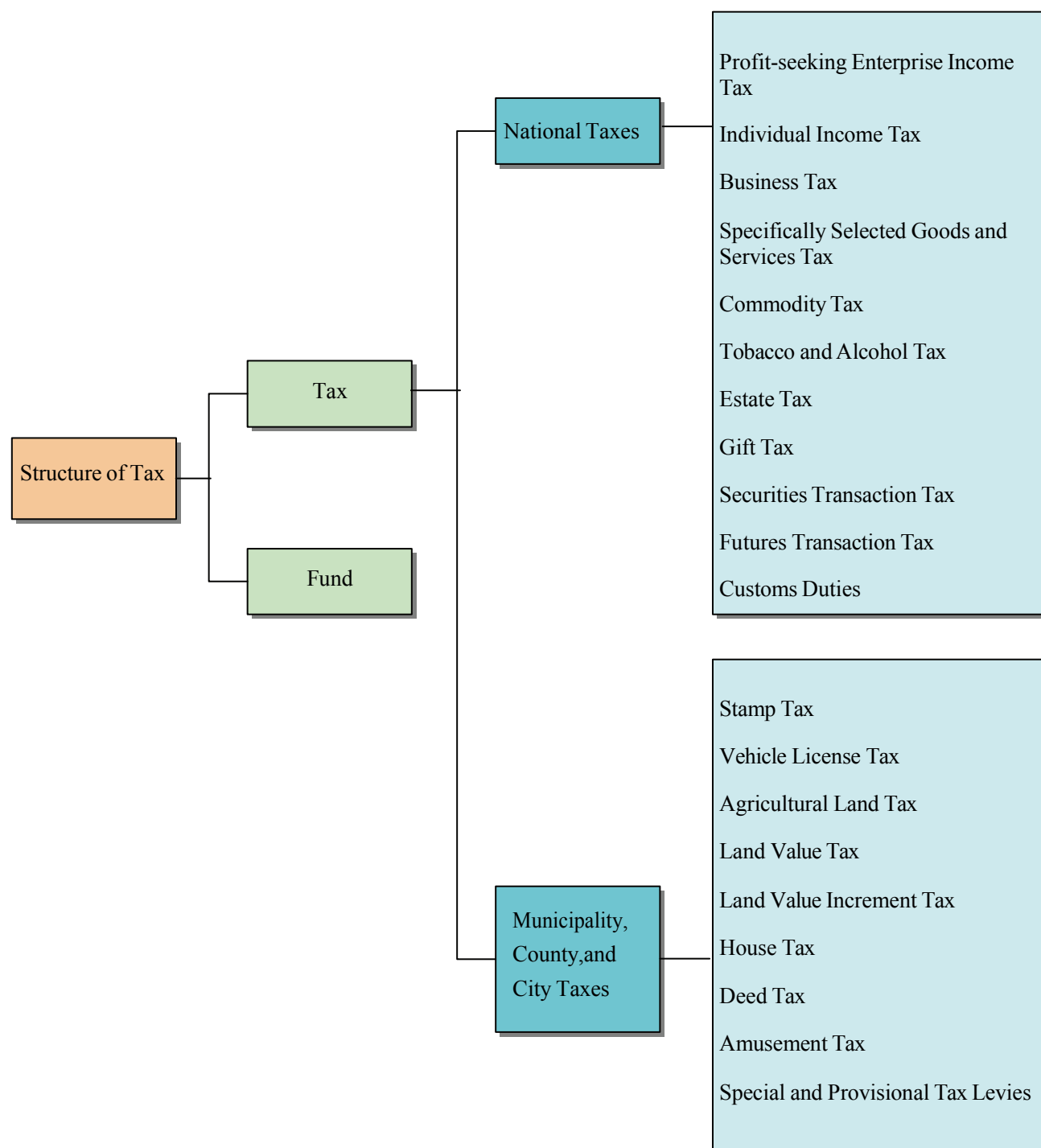
| Organization                                       | Job Title               | Name              | Date Began Office |
|--|-------------------------|-------------------|-------------------|
| Taxation Administration                            | Director-General        | Hsu , Tzu-Mei     | July 2020         |
| National Taxation Bureau of Taipei                 | Director-General        | Sung, Hsiu-Ling   | July 2020         |
| National Taxation Bureau of Kaohsiung              | Director-General        | Tsai, Bi-Chen     | January 2019      |
| National Taxation Bureau of the Northern Area      | Director-General        | Wang, Hsiu-Chung  | August 2016       |
| National Taxation Bureau of the Central Area       | Director-General        | Wu,Lien-Ying      | July 2020         |
| National Taxation Bureau of the Southern Area      | Director-General        | Lu, Jen-Hsiu      | January 2017      |
| Taipei City Revenue Service                        | Director                | Ni, Yung-Jsu      | July 2019         |
| Revenue Service Office, New Taipei City Government | Director                | Chang, Shih-Bin   | August 2020       |
| Local Tax Bureau of Taichung City Government       | Director-General        | Shen, Zheng-An    | March 2019        |
| Finance and Local Tax Bureau, Tainan City          | Director-General        | Chen, Bo-Cheng    | December 2018     |
| Revenue Service Office, Kaohsiung City             | Director                | Lee, Chiung-Hui   | July 2015         |
| Department of Taxation, Taoyuan                    | Director-General        | Yao, Shih-Chang   | December 2018     |
| Local Tax Bureau, Hsinchu County                   | Director-General        | Peng, Hui-Chu     | June 2016         |
| Local Tax Bureau, Miaoli County                    | Director-General        | Huang, Guo-Liang  | January 2019      |
| Tax Bureau, Nantou County                          | Director-General        | Wu, Yu-Hung       | July 2020         |
| Local Tax Bureau, Changhua County                  | Director-General        | Chen, Yen-Hui     | August 2020       |
| Revenue Service Bureau, Yunlin County              | Director-General        | Chang, Yung-Ching | August 2014       |
| Finance and Taxation Bureau, Chiayi County         | Director-General        | Hsiao, Chun-Ming  | December 2018     |
| Finance and Taxation Bureau of Pingtung County     | Director-General        | Cheng, Chun       | September 2015    |
| Finance and Taxation Bureau, Yilan County          | Director-General        | Lu, Tien-Lung     | December 2018     |
| Local Tax Bureau, Hualien County                   | Director-General        | Lu, Yu-Chih       | August 2016       |
| Tax Bureau, Taitung County                         | Director-General        | Li, Su-Chin       | July 2013         |
| Local Tax Bureau, Penghu County                    | Director-General        | Tseng, Hui-Shiang | July 2019         |
| Local Tax Bureau, Keelung City                     | Director-General        | Ou, Chiou-Shya    | January 2014      |
| Local Tax Bureau, Hsinchu City                     | Acting Director-General | Li, Shih-Chen     | July 2020         |
| Finance and Taxation Bureau, Chiayi City           | Director-General        | Lin, Jui- Yen     | December 2018     |
| Tax Bureau, Kinmen County                          | Director-General        | Weng, Tzu-Pao     | July 2019         |
| Finance and Local Tax Bureau, Lienchiang County    | Director-General        | Chen, Sui-Chin    | July 2018         |



**PART II Structure of Tax  
(including Customs Duties and Fund)**



## Structure of Tax ( including Customs Duties and Fund )



Notes: 1.Fund includes the Financial Enterprises Business Tax, Specifically Selected Goods and Services Tax (since 2014, included in tax revenue), Health and Welfare Surcharge on Tobacco, and the Long-term Care Services Development Fund.

2.The Specifically Selected Goods and Services Tax was imposed from June 1, 2011.

3.Customs Duties are imposed by Customs.

4.Agricultural Land Tax has been stop imposed since the second period of 1987.

5.The Mining Concession Tax was abolished in 2003.



**PART III Overview of Tax Revenue  
(for past 10 years)**



## I Overview of taxation

With the development of the economy, tax administration optimization and national taxation awareness have increased, tax revenues (including Customs Duties, Financial Enterprises Business Tax, Health and Welfare Surcharge on Tobacco and Long-term Care Services Development Fund, etc.) have grown rapidly.

In 2019, tax revenue was NT\$2,470.5 billion, which was 1.52 times the 2010 tax revenue of NT\$1,622.2 billion, of which National Taxes increased 55% and Municipality, County, and City Taxes increased 36% compared with the 2010 tax revenue.

### Statistics of tax revenues for 2010 to 2019

Index Base: CY2010=100.

Unit: NT\$1,000; %

| CY   | Total                              | Index Base | National Taxes                          | Index Base | Municipality, County, and City Taxes     | Index Base | Education Surtax                             | Index Base |
|------|------------------------------------|------------|---|------------|--|------------|--|------------|
| 2010 | 1,622,244,070                      | 100        | 1,292,838,818                           | 100        | 273,017,088                              | 100        | (8,851)                                      | 100        |
| 2011 | 1,764,610,616                      | 109        | 1,423,444,129                           | 110        | 280,543,298                              | 103        | 1,118  | (13)       |
| 2012 | 1,796,697,193                      | 111        | 1,447,899,812                           | 112        | 285,447,913                              | 105        | 2,138  | (24)       |
| 2013 | 1,834,124,153                      | 113        | 1,448,390,897                           | 112        | 320,424,641                              | 117        | 1,198  | (14)       |
| 2014 | 1,976,106,922                      | 122        | 1,594,839,262                           | 123        | 322,769,040                              | 118        | 493  | (6)        |
| 2015 | 2,134,857,093                      | 132        | 1,733,504,903                           | 134        | 343,110,612                              | 126        | 7,393  | (84)       |
| 2016 | 2,224,075,454                      | 137        | 1,828,375,406                           | 141        | 337,592,959                              | 124        | (1,454)                                      | 16         |
| 2017 | 2,251,246,001                      | 139        | 1,831,231,508                           | 142        | 356,458,687                              | 131        | 175  | (2)        |
| 2018 | 2,386,944,903                      | 147        | 1,944,277,331                           | 150        | 354,930,856                              | 130        | (12)   | 0          |
| 2019 | 2,470,519,242                      | 152        | 2,003,982,781                           | 155        | 370,946,018                              | 136        | (7)  | 0          |
| CY   | Financial Enterprises Business Tax | Index Base | Health and Welfare Surcharge on Tobacco | Index Base | Long-term Care Services Development Fund | Index Base | Specifically Selected Goods and Services Tax | Index Base |
| 2010 | 21,602,057                         | 100        | 34,794,958                              | 100        | -  | -          | -  | -          |
| 2011 | 23,806,475                         | 110        | 34,609,126                              | 99         | -  | -          | 2,206,470                                    | -          |
| 2012 | 24,719,963                         | 114        | 34,352,076                              | 99         | -  | -          | 4,275,291                                    | -          |
| 2013 | 24,931,718                         | 115        | 35,057,254                              | 101        | -  | -          | 5,318,445                                    | -          |
| 2014 | 25,609,386                         | 119        | 32,888,741                              | 95         | -  | -          | -  | -          |
| 2015 | 25,137,156                         | 116        | 33,097,029                              | 95         | -  | -          | -  | -          |
| 2016 | 23,745,524                         | 110        | 34,363,019                              | 99         | -  | -          | -  | -          |
| 2017 | 23,124,126                         | 107        | 32,178,236                              | 92         | 8,253,269                                | -          | -  | -          |
| 2018 | 24,473,563                         | 113        | 28,186,471                              | 81         | 35,076,694                               | -          | -  | -          |
| 2019 | 26,159,164                         | 121        | 27,721,290                              | 80         | 41,709,996                               | -          | -  | -          |

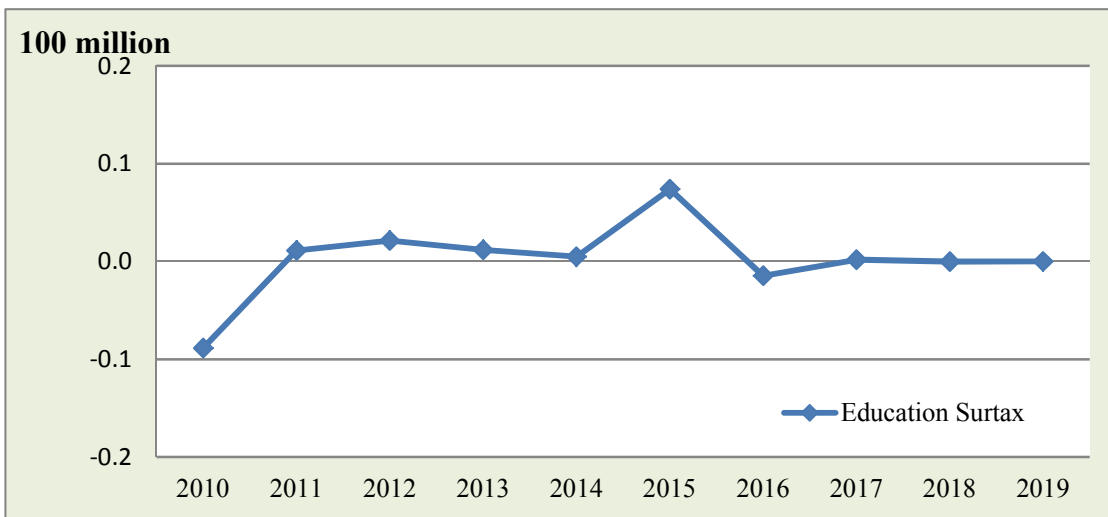
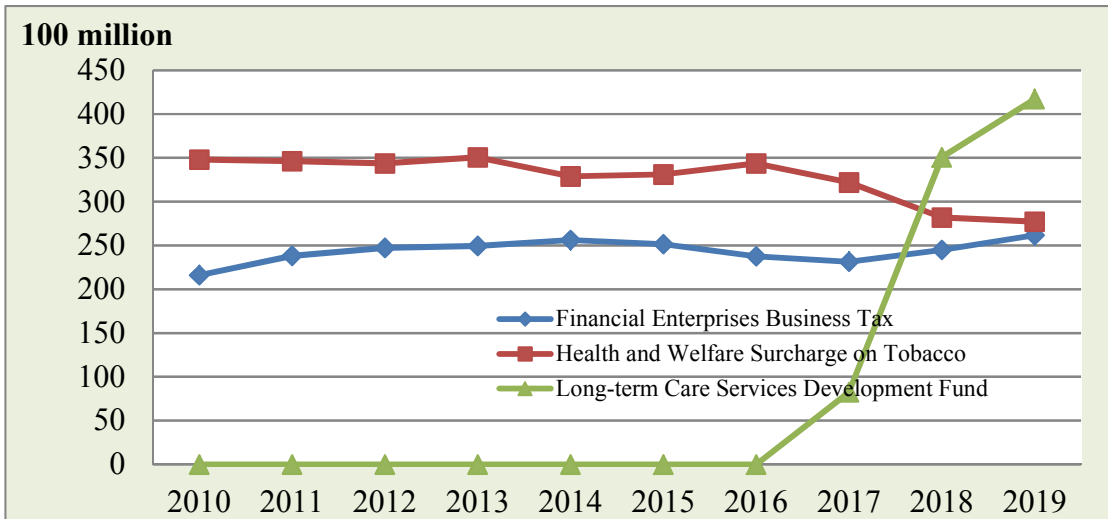
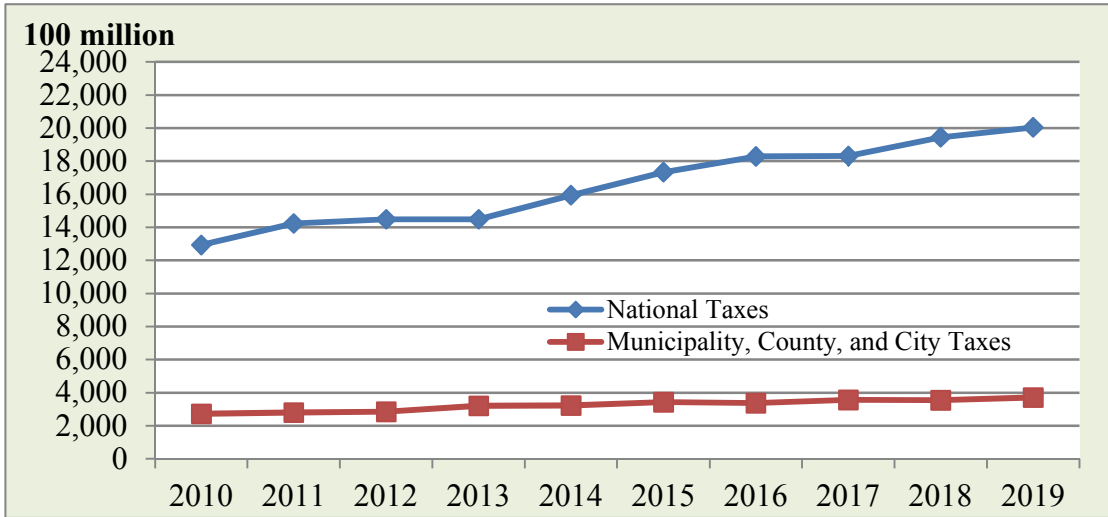
Source: Yearbook of Financial Statistics, Republic of China 2019.

Note: 1. The Specifically Selected Goods and Services Tax was imposed from June 2011, was included in Fund from 2011 to 2013, and was included in national tax from 2014.

2. Since 2014, Municipality, County, and City Tax includes Special and Provisional Tax Levies.

3. The Long-term Care Services Development Fund was established in 2017.

Growth chart of tax revenues for past 10 years



## II Proportion of Taxes in National Tax Revenue

### 1. The proportions of taxes in the National Tax Revenue

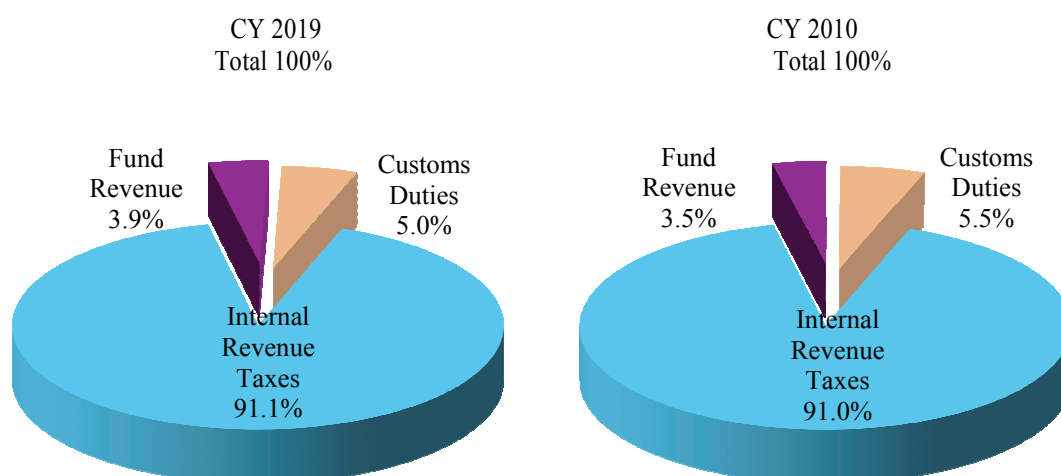
The National Tax Revenue consists of Internal Revenue Taxes, Customs Duties, and the Fund Revenue (this fund includes the Financial Enterprises Business Tax, the Health and Welfare Surcharge on Tobacco, and the Long-term Care Services Development Fund). In the past 10 years, the proportion of each revenue source in the national tax revenue can be found in the table below.

#### Proportions in National Tax Revenue Sources

Unit: %

| Items<br>CY | Total | Internal<br>Revenue<br>Taxes | Customs<br>Duties | Fund<br>Revenue |
|-------------|-------|------------------------------|-------------------|-----------------|
| 2010        | 100.0 | 91.0                         | 5.5               | 3.5             |
| 2011        | 100.0 | 91.1                         | 5.5               | 3.4             |
| 2012        | 100.0 | 91.2                         | 5.3               | 3.5             |
| 2013        | 100.0 | 91.2                         | 5.3               | 3.6             |
| 2014        | 100.0 | 91.6                         | 5.4               | 3.0             |
| 2015        | 100.0 | 92.1                         | 5.2               | 2.7             |
| 2016        | 100.0 | 92.2                         | 5.2               | 2.6             |
| 2017        | 100.0 | 92.1                         | 5.1               | 2.8             |
| 2018        | 100.0 | 91.3                         | 5.0               | 3.7             |
| 2019        | 100.0 | 91.1                         | 5.0               | 3.9             |

Source: Yearbook of Financial Statistics, Republic of China 2019.



## 2. The proportion of tax revenue in national tax revenue-by item of tax

In the past 10 years, the tax revenue structure has changed significantly, with income tax accounting for at least 36.4% to 46.5% of the national tax revenue, indicating that the tax structure has been oriented towards income tax.

### Proportion of tax revenue in national tax revenue-by item of tax (Education Surtax is excluded)

Unit: %

| Items  | CY | 2010  | 2011  | 2012  | 2013  | 2014  |
|--|----|-------|-------|-------|-------|-------|
| Grand Total                                  |    | 100.0 | 100.0 | 100.0 | 100.0 | 100.0 |
| Customs Duties                               |    | 5.5   | 5.5   | 5.3   | 5.3   | 5.4   |
| Income Tax                                   |    | 36.4  | 40.2  | 42.3  | 40.5  | 41.2  |
| Profit-seeking Enterprise Income Tax         |    | 17.6  | 20.8  | 20.5  | 19.1  | 20.4  |
| Individual Income Tax                        |    | 18.8  | 19.4  | 21.9  | 21.4  | 20.8  |
| Estate and Gift Tax*                         |    | 2.5   | 1.3   | 1.6   | 1.3   | 1.3   |
| Estate Tax*                                  |    | 1.9   | 0.9   | 1.1   | 0.8   | 0.7   |
| Gift Tax*                                    |    | 0.6   | 0.4   | 0.5   | 0.5   | 0.6   |
| Commodity Tax                                |    | 9.3   | 9.3   | 9.0   | 8.9   | 8.7   |
| Securities Transaction Tax                   |    | 6.4   | 5.3   | 4.0   | 3.9   | 4.5   |
| Futures Transaction Tax                      |    | 0.3   | 0.3   | 0.2   | 0.1   | 0.1   |
| Tobacco and Alcohol Tax*                     |    | 2.7   | 2.5   | 2.5   | 2.4   | 2.2   |
| Specifically Selected Goods and Services Tax |    | —     | 0.1   | 0.2   | 0.3   | 0.3   |
| Business Tax**                               |    | 17.9  | 17.4  | 17.1  | 17.9  | 18.3  |
| Financial Enterprises Business Tax           |    | 1.3   | 1.3   | 1.4   | 1.4   | 1.3   |
| Land Tax                                     |    | 8.4   | 8.0   | 8.0   | 9.5   | 8.8   |
| Land Value Tax                               |    | 3.9   | 3.6   | 3.5   | 3.9   | 3.6   |
| Land Value Increment Tax                     |    | 4.5   | 4.5   | 4.5   | 5.6   | 5.1   |
| House Tax                                    |    | 3.6   | 3.4   | 3.4   | 3.4   | 3.3   |
| Vehicle License Tax                          |    | 3.3   | 3.1   | 3.1   | 3.1   | 3.0   |
| Deed Tax                                     |    | 0.9   | 0.7   | 0.7   | 0.7   | 0.6   |
| Stamp Tax                                    |    | 0.6   | 0.5   | 0.6   | 0.6   | 0.5   |
| Amusement Tax                                |    | 0.1   | 0.1   | 0.1   | 0.1   | 0.1   |
| Special and Provisional Tax Levies           |    | —     | —     | —     | —     | 0.0   |
| Education Surtax                             |    | -0.0  | 0.0   | 0.0   | 0.0   | 0.0   |
| Health and Welfare Surcharge on Tobacco      |    | 2.1   | 2.0   | 1.9   | 1.9   | 1.7   |
| Items  | CY | 2015  | 2016  | 2017  | 2018  | 2019  |
| Grand Total                                  |    | 100.0 | 100.0 | 100.0 | 100.0 | 100.0 |
| Customs Duties                               |    | 5.2   | 5.2   | 5.1   | 5.0   | 5.0   |
| Income Tax                                   |    | 43.9  | 45.2  | 43.8  | 45.1  | 46.5  |
| Profit-seeking Enterprise Income Tax         |    | 21.7  | 22.9  | 22.4  | 23.8  | 26.2  |
| Individual Income Tax                        |    | 22.2  | 22.3  | 21.5  | 21.3  | 20.3  |
| Estate and Gift Tax*                         |    | 1.5   | 2.1   | 2.3   | 1.3   | 1.4   |
| Estate Tax*                                  |    | 0.9   | 1.1   | 0.9   | 0.9   | 1.0   |
| Gift Tax*                                    |    | 0.7   | 1.0   | 1.3   | 0.4   | 0.4   |
| Commodity Tax                                |    | 8.6   | 8.2   | 7.9   | 7.5   | 7.2   |
| Securities Transaction Tax                   |    | 3.8   | 3.2   | 4.0   | 4.2   | 3.7   |
| Futures Transaction Tax                      |    | 0.2   | 0.2   | 0.2   | 0.3   | 0.2   |
| Tobacco and Alcohol Tax*                     |    | 2.1   | 2.1   | 2.2   | 2.9   | 2.8   |
| Specifically Selected Goods and Services Tax |    | 0.2   | 0.1   | 0.1   | 0.1   | 0.1   |
| Business Tax**                               |    | 16.9  | 17.0  | 17.1  | 17.4  | 17.0  |
| Financial Enterprises Business Tax           |    | 1.2   | 1.1   | 1.0   | 1.0   | 1.1   |
| Land Tax                                     |    | 8.6   | 8.0   | 8.4   | 7.6   | 7.8   |
| Land Value Tax                               |    | 3.3   | 4.2   | 4.2   | 3.8   | 3.7   |
| Land Value Increment Tax                     |    | 5.3   | 3.7   | 4.2   | 3.8   | 4.1   |
| House Tax                                    |    | 3.3   | 3.3   | 3.4   | 3.3   | 3.3   |
| Vehicle License Tax                          |    | 2.9   | 2.8   | 2.8   | 2.7   | 2.7   |
| Deed Tax                                     |    | 0.6   | 0.5   | 0.6   | 0.6   | 0.6   |
| Stamp Tax                                    |    | 0.5   | 0.5   | 0.5   | 0.5   | 0.5   |
| Amusement Tax                                |    | 0.1   | 0.1   | 0.1   | 0.1   | 0.1   |
| Special and Provisional Tax Levies           |    | 0.0   | 0.0   | 0.1   | 0.1   | 0.1   |
| Education Surtax                             |    | 0.0   | -0.0  | 0.0   | -0.0  | -0.0  |
| Health and Welfare Surcharge on Tobacco      |    | 1.6   | 1.5   | 1.4   | 1.2   | 1.1   |

Source: Yearbook of Financial Statistics, Republic of China 2019.

Note: 1.\*Since 2017, Estate and Gift Tax, Tobacco and Alcohol Tax, both include revenues for the Long-term Care Services Development Fund.

2.\*\*Business Tax include undesignated portion and Financial Enterprises Business Tax, which were appropriated to financial special reserves.

### III Statistics of National Tax Revenue by Tax Items over the years

In the past decade, the national tax revenue, except for the Securities Transactions Tax and Futures Transactions Tax, were affected by market transactions. The other taxes increased to NT\$2,071.8 billion in 2019, the highest increase in the past decade.

#### Statistics of national tax revenue for 2010 to 2019

Index Base: CY 2010=100.

Units: NT\$1,000; %.

| Items<br>CY | Profit-seeking Enterprise Income Tax* |            | Individual Income Tax* |            | Income Tax    |            | Estate and Gift Tax* |            | Commodity Tax |            | Tobacco and Alcohol Tax* |            | Securities Transaction Tax |            |
|-------------|---------------------------------------|------------|------------------------|------------|---------------|------------|----------------------|------------|---------------|------------|--------------------------|------------|----------------------------|------------|
|             | Amount                                | Index Base | Amount                 | Index Base | Amount        | Index Base | Amount               | Index Base | Amount        | Index Base | Amount                   | Index Base | Amount                     | Index Base |
| 2010        | 285,701,268                           | 100.0      | 304,686,208            | 100.0      | 590,387,476   | 100.0      | 40,329,876           | 100.0      | 150,777,174   | 100.0      | 44,516,115               | 100.0      | 104,574,112                | 100.0      |
| 2011        | 367,186,074                           | 128.5      | 343,004,982            | 112.6      | 710,191,056   | 120.3      | 23,658,842           | 58.7       | 164,876,634   | 109.4      | 44,660,361               | 100.3      | 93,990,479                 | 89.9       |
| 2012        | 367,744,332                           | 128.7      | 393,065,301            | 129.0      | 760,809,633   | 128.9      | 28,280,408           | 70.1       | 160,897,298   | 106.7      | 44,938,842               | 100.9      | 71,940,358                 | 68.8       |
| 2013        | 351,115,287                           | 122.9      | 392,174,282            | 128.7      | 743,289,569   | 125.9      | 23,727,917           | 58.8       | 162,503,713   | 107.8      | 44,769,009               | 100.6      | 71,383,425                 | 68.3       |
| 2014        | 402,631,678                           | 140.9      | 410,852,287            | 134.8      | 813,483,965   | 137.8      | 25,444,324           | 63.1       | 172,897,429   | 114.7      | 43,809,966               | 98.4       | 88,710,600                 | 84.8       |
| 2015        | 462,784,445                           | 162.0      | 473,946,434            | 155.6      | 936,730,879   | 158.7      | 32,735,575           | 81.2       | 183,130,790   | 121.5      | 44,160,168               | 99.2       | 82,032,932                 | 78.4       |
| 2016        | 510,388,471                           | 178.6      | 495,971,933            | 162.8      | 1,006,360,404 | 170.5      | 47,515,086           | 117.8      | 181,906,968   | 120.6      | 45,626,761               | 102.5      | 70,854,816                 | 67.8       |
| 2017        | 503,312,206                           | 176.2      | 483,099,840            | 158.6      | 986,412,046   | 167.1      | 51,085,366           | 126.7      | 178,467,404   | 118.4      | 50,234,984               | 112.8      | 89,967,010                 | 86.0       |
| 2018        | 567,944,689                           | 198.8      | 509,134,609            | 167.1      | 1,077,079,298 | 182.4      | 31,824,830           | 78.9       | 180,111,430   | 119.5      | 69,602,514               | 156.4      | 101,170,666                | 96.7       |
| 2019        | 647,910,948                           | 226.8      | 500,903,111            | 164.4      | 1,148,814,059 | 194.6      | 34,925,726           | 86.6       | 176,878,186   | 117.3      | 68,649,317               | 154.2      | 91,204,700                 | 87.2       |

| Items<br>CY | Futures Transaction Tax |            | Business Tax** |            | Specifically Selected Goods and Services Tax |            | Mining Concession Tax |            | Customs Duties |            | Grand Total   |            |
|-------------|-------------------------|------------|----------------|------------|--|------------|-----------------------|------------|----------------|------------|---------------|------------|
|             | Amount                  | Index Base | Amount         | Index Base | Amount                                       | Index Base | Amount                | Index Base | Amount         | Index Base | Amount        | Index Base |
| 2010        | 4,556,136               | 100.0      | 289,815,747    | 100.0      | -  | -          | 11                    | 100.0      | 89,484,228     | 100.0      | 1,314,440,875 | 100.0      |
| 2011        | 5,859,643               | 128.6      | 307,690,760    | 106.2      | 2,206,470                                    | -          | 86                    | 781.8      | 96,322,743     | 107.6      | 1,447,250,604 | 110.3      |
| 2012        | 4,297,887               | 94.3       | 306,537,199    | 105.8      | 4,275,291                                    | -          | 0                     | 0.0        | 94,918,150     | 106.1      | 1,472,619,775 | 112.4      |
| 2013        | 2,669,191               | 58.6       | 327,971,096    | 113.2      | 5,318,445                                    | -          | 0                     | 0.0        | 97,008,695     | 108.4      | 1,473,322,615 | 112.5      |
| 2014        | 2,861,748               | 62.8       | 360,697,761    | 124.5      | 5,400,976                                    | -          | 0                     | 0.0        | 107,141,879    | 119.7      | 1,620,448,648 | 123.3      |
| 2015        | 3,783,497               | 83.0       | 360,898,524    | 124.5      | 4,191,738                                    | -          | 0                     | 0.0        | 110,977,956    | 124.0      | 1,758,642,059 | 133.8      |
| 2016        | 3,705,866               | 81.3       | 378,354,422    | 130.5      | 2,825,530                                    | -          | 0                     | 0.0        | 114,971,077    | 128.5      | 1,852,120,930 | 140.9      |
| 2017        | 4,190,423               | 92.0       | 384,978,061    | 132.8      | 2,316,766                                    | -          | 0                     | 0.0        | 114,956,843    | 128.5      | 1,862,608,903 | 141.7      |
| 2018        | 6,099,829               | 133.9      | 415,408,541    | 143.3      | 2,473,693                                    | -          | 0                     | 0.0        | 120,056,787    | 134.2      | 2,003,827,588 | 152.4      |
| 2019        | 4,694,563               | 103.0      | 420,908,352    | 145.2      | 2,734,703                                    | -          | 0                     | 0.0        | 123,042,335    | 137.5      | 2,071,851,941 | 157.6      |

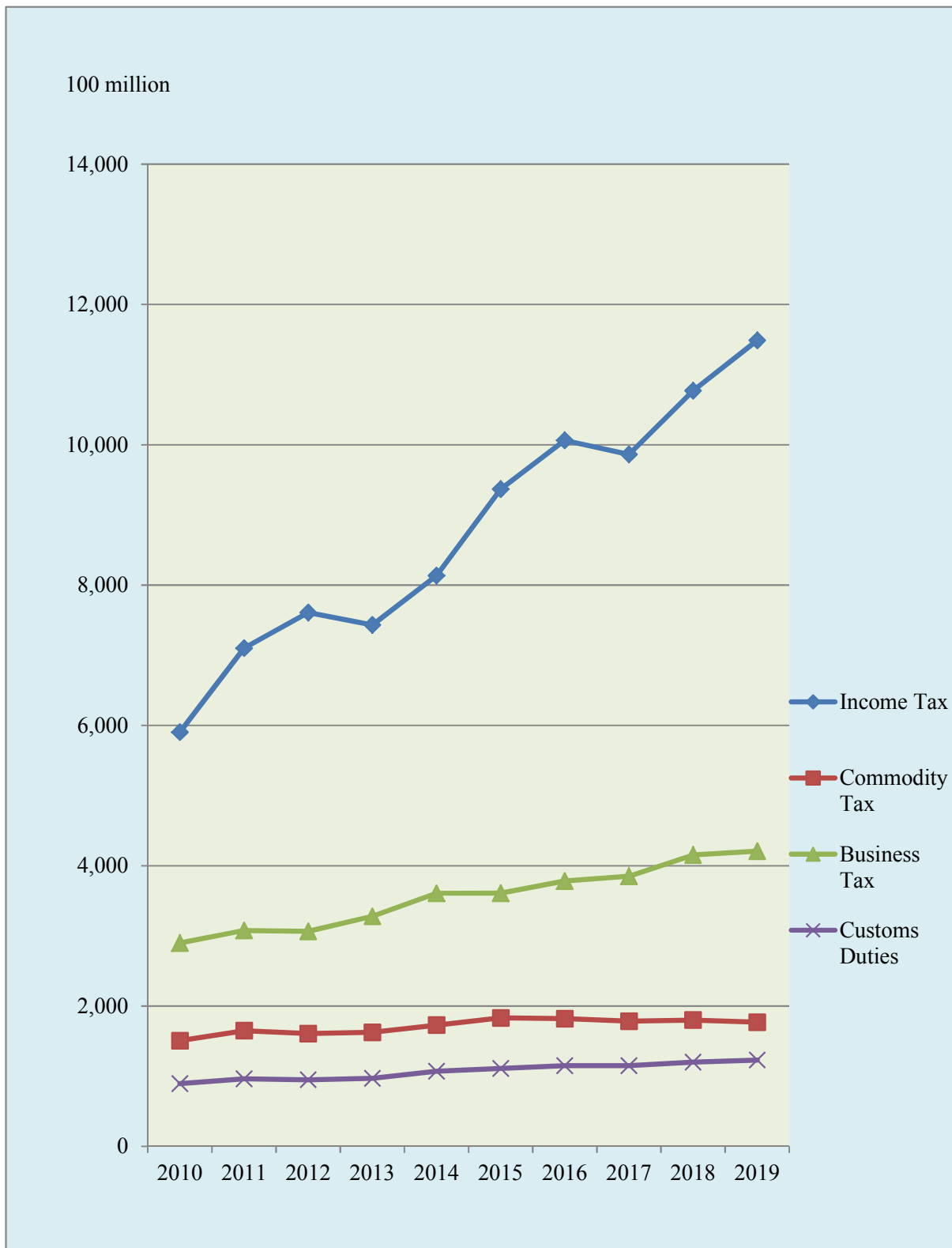
Source: Yearbook of Financial Statistics, Republic of China 2019.

Note: 1. The Specifically Selected Goods and Services Tax was imposed from June 2011.

2. \* Since 2017, Income Tax, the Estate and Gift Tax, and the Tobacco and Alcohol Tax include revenues for the Long-term Care Services Development Fund.

3. \*\* Business Tax includes the undesignated portion of the Financial Enterprises Business Tax, which was appropriated to financial special reserves.

**Growth chart of major national tax revenues( income tax, commodity tax, and customs duties) for past 10 years**



## IV Tax Revenues of Municipality, County, and City over the years

### Statistics of municipality, county, and city taxes for past 10 years

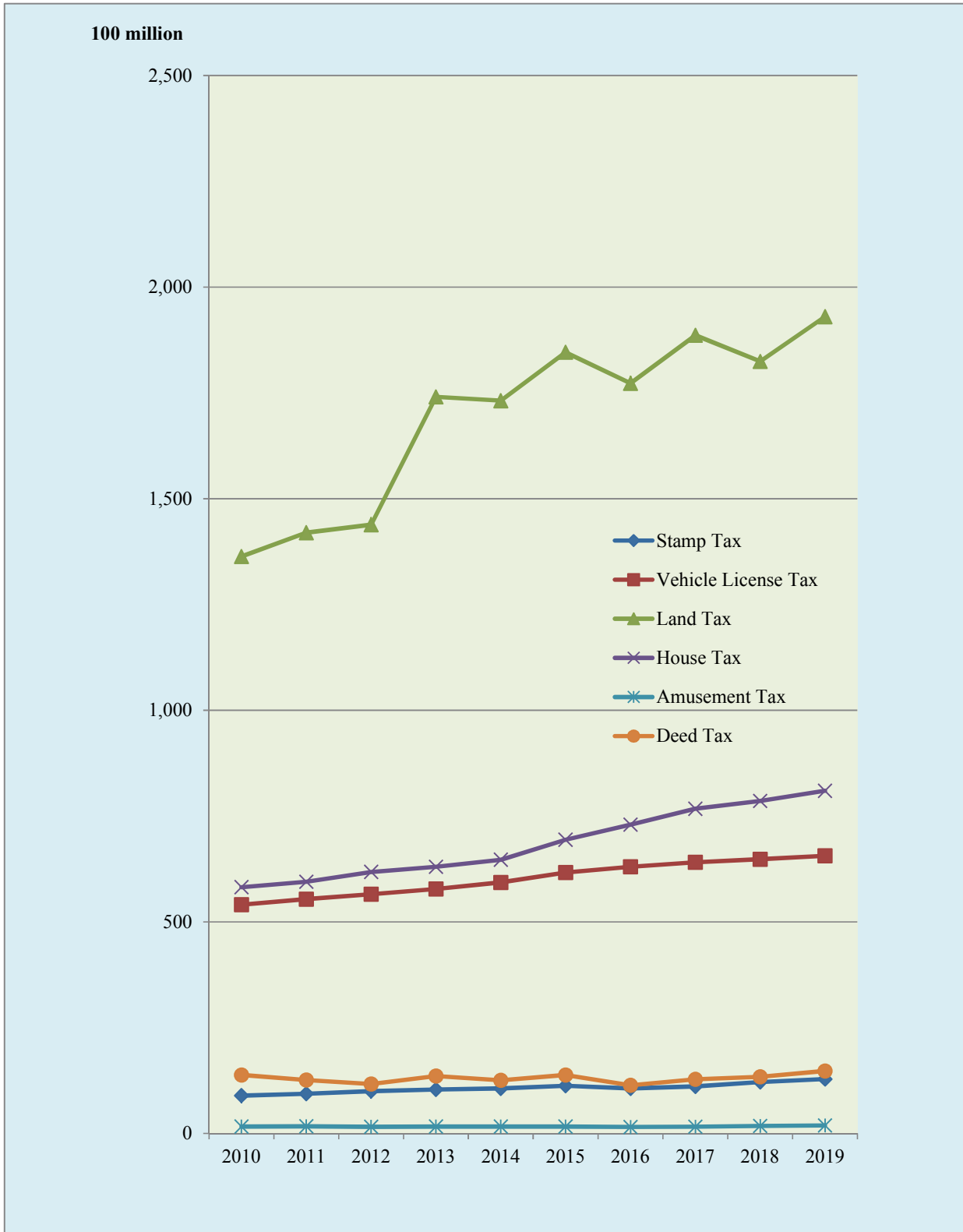
Unit: NT\$1,000

| CY   | Total       | Stamp Tax  | Vehicle License Tax | Land Tax    | House Tax  | Amusement Tax | Deed Tax   | Special and Provisional Tax Levies |
|------|-------------|------------|---------------------|-------------|------------|---------------|------------|------------------------------------|
| 2010 | 273,017,088 | 8,944,538  | 54,051,738          | 136,356,984 | 58,202,695 | 1,645,676     | 13,815,457 | -                                  |
| 2011 | 280,543,298 | 9,397,243  | 55,380,372          | 141,981,922 | 59,466,872 | 1,676,424     | 12,640,465 | -                                  |
| 2012 | 285,447,913 | 10,009,459 | 56,533,991          | 143,848,851 | 61,796,279 | 1,566,328     | 11,693,005 | -                                  |
| 2013 | 320,424,641 | 10,376,985 | 57,759,406          | 174,080,706 | 63,013,454 | 1,633,756     | 13,560,334 | -                                  |
| 2014 | 322,769,040 | 10,643,617 | 59,326,118          | 173,174,512 | 64,672,878 | 1,623,815     | 12,534,737 | 793,363                            |
| 2015 | 343,110,612 | 11,285,336 | 61,679,154          | 184,598,397 | 69,421,961 | 1,632,574     | 13,826,660 | 666,530                            |
| 2016 | 337,592,959 | 10,644,443 | 63,016,185          | 177,273,904 | 72,962,850 | 1,524,589     | 11,375,814 | 795,174                            |
| 2017 | 356,458,687 | 11,099,530 | 64,076,999          | 188,638,208 | 76,723,547 | 1,595,772     | 12,789,424 | 1,535,207                          |
| 2018 | 354,930,856 | 12,146,755 | 64,830,354          | 182,436,812 | 78,588,425 | 1,777,643     | 13,365,520 | 1,785,347                          |
| 2019 | 370,946,018 | 12,856,984 | 65,597,591          | 193,033,959 | 80,972,489 | 1,877,780     | 14,773,001 | 1,834,214                          |

Source: Yearbook of Financial Statistics, Republic of China 2019.

Note: Since 2014, Municipality, County, and City Tax includes Special and Provisional Tax Levies.

### Growth chart of municipality, county, and city tax for past 10 years



## V The proportion of direct and indirect taxes for past 10 years

Direct Taxes include Income Tax (including Consolidated Housing and Land Income Tax for Long-term Care Services Development Fund), Securities Transaction Tax, Futures Transaction Tax, Land Tax, House Tax, Estate and Gift Tax (including Long-term Care Services Development Fund), Mining Concession Tax, Deed Tax and their attached Education Surtax, Customs Duties、Business Tax (including Financial Enterprises Business Tax), Commodity Tax, and others (including Specifically Selected Goods and Services Tax, Vehicle License Tax, Stamp Tax, Amusement Tax, Special and Provisional Tax Levies, Health and Welfare Surcharge on Tobacco and Tobacco and Alcohol Tax, which includes Long-term Care Services Development Fund) are classified as Indirect Taxes. In the past 10 years, the proportion of Direct Taxation to National Tax revenue has remained between 58.5% and 63.5%.

### Statistics of the proportion of direct and indirect taxes for past 10 years

Unit: %.

| CY   | Items | Direct Taxes |            |                           |        | Indirect Taxes |              |               |        |                       |
|------|-------|--------------|------------|---------------------------|--------|----------------|--------------|---------------|--------|-----------------------|
|      |       | Total        | Income Tax |                           | Others | Total          | Business Tax | Commodity Tax | Others |                       |
|      |       |              | Subtotal   | Profit-seeking Enterprise |        |                |              |               |        | Individual Income Tax |
| 2010 |       | 58.5%        | 36.4%      | 17.6%                     | 18.8%  | 22.1%          | 41.5%        | 17.9%         | 9.3%   | 14.4%                 |
| 2011 |       | 59.4%        | 40.2%      | 20.8%                     | 19.4%  | 19.1%          | 40.6%        | 17.4%         | 9.3%   | 13.8%                 |
| 2012 |       | 60.3%        | 42.3%      | 20.5%                     | 21.9%  | 17.9%          | 39.7%        | 17.1%         | 9.0%   | 13.7%                 |
| 2013 |       | 59.5%        | 40.5%      | 19.1%                     | 21.4%  | 19.0%          | 40.5%        | 17.9%         | 8.9%   | 13.7%                 |
| 2014 |       | 59.8%        | 41.2%      | 20.4%                     | 20.8%  | 18.6%          | 40.2%        | 18.3%         | 8.7%   | 13.2%                 |
| 2015 |       | 62.0%        | 43.9%      | 21.7%                     | 22.2%  | 18.1%          | 38.0%        | 16.9%         | 8.6%   | 12.5%                 |
| 2016 |       | 62.5%        | 45.2%      | 22.9%                     | 22.3%  | 17.3%          | 37.5%        | 17.0%         | 8.2%   | 12.3%                 |
| 2017 |       | 62.6%        | 43.8%      | 22.4%                     | 21.5%  | 18.8%          | 37.4%        | 17.1%         | 7.9%   | 12.3%                 |
| 2018 |       | 62.4%        | 45.1%      | 23.8%                     | 21.3%  | 17.3%          | 37.6%        | 17.4%         | 7.5%   | 12.6%                 |
| 2019 |       | 63.5%        | 46.5%      | 26.2%                     | 20.3%  | 17.0%          | 36.5%        | 17.0%         | 7.2%   | 12.3%                 |

Source: Yearbook of Financial Statistics, Republic of China 2019.

Explanation: Figures may not add up to the total due to rounding.



**PART IV** Overview of Internal Revenue Tax  
Collection in 2019



## I Comparison of tax revenues, budgets, and tax revenues in last year

The budget for internal revenue taxes in 2019 (excluding Customs Duties and Health and Welfare Surcharge on Tobacco) was NT\$2,244.5 billion. The tax revenue was NT\$2,319.8 billion, exceeding the budget by NT\$75.2 billion (including Education Surtax), or 3.4%. The 2018 tax revenue was NT\$2,238.7 billion, so the 2019 tax revenue showed an increase of 3.6%. The analysis of the major tax items is as follows:

1. Profit-seeking Enterprise Income Tax: In 2019, tax revenues were NT\$647.9 billion. The main reason for this is that the economic growth rate in 2018 has been revised up, and corporate profitability of the company has increased compared with the original estimate. The tax revenues exceeded the budget by NT\$29.4 billion with a tax achievement rate of 104.8%. Compared with the previous year's tax revenues of NT\$567.9 billion, there was an increase of 14.1%.
2. Individual Income Tax: In 2019, tax revenues were NT\$500.9 billion. The main reason for this was an increase in the dividend pay and pay level in 2018. The tax revenues exceeded the budget by NT\$42.2 billion with a tax achievement rate of 109.2%. Compared with the previous year's tax revenues of NT\$509.1 billion, there was a decrease of 1.6%.
3. Estate and Gift Tax: In 2019, tax revenues were NT\$34.9 billion. The main reason was the collection of old cases, causing the tax revenues exceeded the budget by NT\$1.8 billion with a tax achievement rate of 105.5%. Compared with the previous year with tax revenues of NT\$31.8 billion, there was an increase of 9.7%.
4. Commodity Tax: In 2019, tax revenues were NT\$176.9 billion. The main reason for this was an overhaul of oil and gas equipment and reduction in consumption of oil products, and increase in the amount of tax reduction and refund for electrical appliances and the replacement of old large vehicles, causing tax revenues to reduce the budget by NT\$4.3 billion with a tax achievement rate of 97.6%. Compared with the previous year with tax revenues of NT\$180.1 billion, there was a decrease of 1.8%.
5. Tobacco and Alcohol Tax: In 2019, tax revenues were NT\$68.6 billion (including revenues for the Long-term Care Services Development Fund). The main reason for this was that the market demand for tobacco products is lower than estimated, as well as declining tax on domestic production and imported tobacco products, resulting in the tax revenues exceeding the budget by NT\$3.5 billion with a tax achievement rate of 105.4%. Compared with the previous year with tax revenues of NT\$69.6 billion, there was a decrease of 1.4%.
6. Securities Transaction Tax: In 2019, tax revenues were NT\$91.2 billion. The main reason for this was that the transaction value of the securities market was slightly lower than estimated, causing tax revenues to reduce the budget by NT\$21.7 billion with a tax achievement rate of 80.8%. Compared with the previous year tax revenues of NT\$101.2 billion, there was a decrease of 9.9%.
7. Business Tax: In 2019, tax revenues were NT\$420.9 billion. The main reason for this was the growth in domestic consumption, resulting in the tax revenues exceeding the budget by NT\$5.8 billion with a tax achievement rate of 101.4%. Compared with the previous year with tax revenues of NT\$415.4 billion, there was an increase of 1.3%.
8. Land Value Tax: In 2019, tax revenues were NT\$91.9 billion. The main reason was Land Value Tax registration check and clear old tax arrears, resulting in the tax revenues exceeding the budget by NT\$0.8 billion with a tax achievement rate of 100.9%. This is equivalent to the amount of the previous year of 91.9 billion.
9. Land Value Increment Tax: In 2019, tax revenues were NT\$101.1 billion. The main reason was the increase in the total amount of land price, resulting in tax revenues exceeding the budget by NT\$10.8 billion with a tax achievement rate of 112%. Compared with the previous year tax revenues of NT\$90.6 billion, there was an increase of 11.7%.

**Comparison of tax revenues, the budgets in 2019  
and tax revenues in last year**

Units: NT\$100 million, %.

| Tax items                                    | Budget<br>in 2019<br>(1) | Tax revenues<br>in 2019<br>(2) | Increase<br>(decrease)<br>number<br>(3)=(2)-(1) | tax<br>achievement<br>rate<br>(4)=(2)/(1) | Tax revenues<br>in 2018<br>(5) | Growth<br>rate<br>(6)=(2)/(5)-1 |
|--|--------------------------|--------------------------------|---|---|--------------------------------|---------------------------------|
| Total  | 22,445.22                | 23,197.56                      | 752.34  | 103.4                                     | 22,387.02                      | 3.6                             |
| <b>National Taxes</b>                        | 18,929.67                | 19,488.10                      | 558.43  | 103.0                                     | 18,837.71                      | 3.5                             |
| Income Tax                                   | 10,771.92                | 11,488.14                      | 716.22  | 106.6                                     | 10,770.79                      | 6.7                             |
| Profit-seeking Enterprise Income Tax         | 6,185.17                 | 6,479.11                       | 293.94  | 104.8                                     | 5,679.45                       | 14.1                            |
| Individual Income Tax                        | 4,586.76                 | 5,009.03                       | 422.28  | 109.2                                     | 5,091.35                       | -1.6                            |
| Estate and Gift Tax*                         | 331.05                   | 349.26                         | 18.21   | 105.5                                     | 318.25                         | 9.7                             |
| Commodity Tax                                | 1,811.68                 | 1,768.78                       | -42.90  | 97.6                                      | 1,801.11                       | -1.8                            |
| Securities Transaction Tax                   | 1,129.00                 | 912.05                         | -216.95   | 80.8                                      | 1,011.71                       | -9.9                            |
| Futures Transaction Tax                      | 61.50                    | 46.95                          | -14.55  | 76.3                                      | 61.00                          | -23.0                           |
| Tobacco and Alcohol Tax*                     | 651.33                   | 686.49                         | 35.17   | 105.4                                     | 696.03                         | -1.4                            |
| Specifically Selected Goods and Services Tax | 21.74                    | 27.35                          | 5.61  | 125.8                                     | 24.74                          | 10.6                            |
| Business Tax**                               | 4,151.45                 | 4,209.08                       | 57.63   | 101.4                                     | 4,154.09                       | 1.3                             |
| <b>Municipality, County, and City Taxes</b>  | 3,515.55                 | 3,709.46                       | 193.91  | 105.5                                     | 3,549.31                       | 4.5                             |
| Stamp Tax                                    | 109.67                   | 128.57                         | 18.90   | 117.2                                     | 121.47                         | 5.8                             |
| Vehicle License Tax                          | 645.56                   | 655.98                         | 10.41   | 101.6                                     | 648.30                         | 1.2                             |
| Land Tax                                     | 1,813.93                 | 1,930.34                       | 116.41  | 106.4                                     | 1,824.37                       | 5.8                             |
| Land Value Tax                               | 910.70                   | 918.97                         | 8.27  | 100.9                                     | 918.85                         | 0.0                             |
| Land Value Increment Tax                     | 903.23                   | 1,011.37                       | 108.14  | 112.0                                     | 905.52                         | 11.7                            |
| House Tax                                    | 787.98                   | 809.72                         | 21.75   | 102.8                                     | 785.88                         | 3.0                             |
| Amusement Tax                                | 15.54                    | 18.78                          | 3.23  | 120.8                                     | 17.78                          | 5.6                             |
| Deed Tax                                     | 126.11                   | 147.73                         | 21.62   | 117.1                                     | 133.66                         | 10.5                            |
| Special and Provisional Tax Levies           | 16.76                    | 18.34                          | 1.59  | 109.5                                     | 17.85                          | 2.7                             |
| <b>Education Surtax</b>                      | -                        | -                              | -   | -   | -                              | -                               |

Source: Yearbook of Financial Statistics, Republic of China 2019.

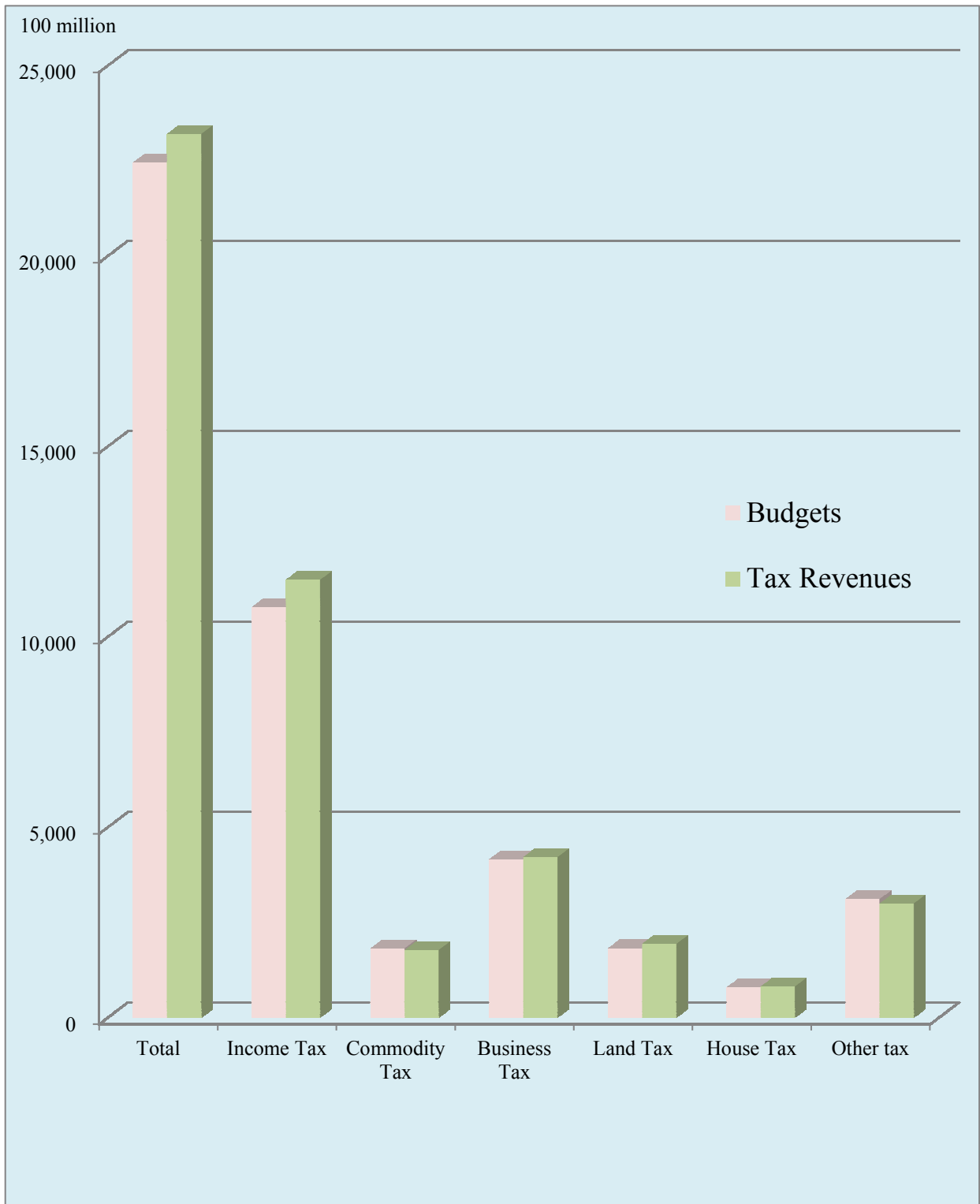
Explanation: 1. The specifically selected goods and services tax was imposed from June 2011. Special and Provisional Tax Levies included in Municipality, County, and City Taxes.

2. Figures may not add up to the total due to rounding.

Note: 1.\* Estate and Gift Tax, Tobacco and Alcohol Tax include taxes allocated to the Long-term Care Services Development Fund.

2. \*\* Business tax includes the undesignated portion of the financial enterprises business tax, which was appropriated to financial special reserves.

**Comparison chart of tax revenues and budgets in 2019**



## II Comparison of tax revenues, budgets, and tax revenues in last year of tax collection agencies

1. National Taxation Bureau of Taipei  
In 2019, tax revenues were NT\$730.6 billion, exceeding the budget of NT\$699.4 billion by NT\$31.1 billion. The tax achievement rate was 104.4%, a decrease of 0.3% compared with the previous year's tax revenues.
2. National Taxation Bureau of the Northern Area  
In 2019, tax revenues were NT\$621 billion, exceeding the budget of NT\$589 billion by NT\$32 billion. The tax achievement rate was 105.4%, an increase of 10.3% compared with the previous year's tax revenues.
3. National Taxation Bureau of the Central Area  
In 2019, tax revenues were NT\$291.7 billion, exceeding the budget of NT\$269.6 billion by NT\$22.1 billion. The tax achievement rate was 108.2%, an increase of 0.3% compared with the previous year's tax revenues.
4. National Taxation Bureau of the Southern Area  
In 2019, tax revenues were NT\$134.5 billion, exceeding the budget of NT\$96.2 billion by NT\$38.3 billion. The tax achievement rate was 139.8%, an increase of 6% compared with the previous year's tax revenues.
5. National Taxation Bureau of Kaohsiung  
In 2019, tax revenues were NT\$198.8 billion, exceeding the budget of NT\$185.9 billion by NT\$12.9 billion. The tax achievement rate was 106.9%, an increase of 0.2% compared with the previous year's tax revenues,.
6. Tax collection agencies of each county/ city government  
In 2019, tax revenues were NT\$78.8 billion, exceeding the budget of NT\$73.5 billion by NT\$5.3 billion. The tax achievement rate was 107.3%, an increase of 2.5% compared with the previous year's tax revenues.
7. Taipei City Revenue Service Office  
In 2019, tax revenues were NT\$74.6 billion, exceeding the budget of NT\$72.6 billion by NT\$2 billion. The tax achievement rate was 102.8%, an increase of 3.9% compared with the previous year's tax revenues.
8. New Taipei City Revenue Service Office  
In 2019, tax revenues were NT\$61.2 billion, exceeding the budget of NT\$57.4 billion by NT\$3.7 billion. The tax achievement rate was 106.5%, an increase of 2.4% compared with the previous year's tax revenues.
9. Taoyuan City Revenue Service Office  
In 2019, tax revenues were NT\$38.7 billion, exceeding the budget of NT\$38.1 billion by NT\$0.6 billion. The tax achievement rate was 101.7%, an increase of 7.8% compared with the previous year's tax revenues.
10. Taichung City Revenue Service Office  
In 2019, tax revenues were NT\$47.7 billion, exceeding the budget of NT\$42.9 billion by NT\$4.8 billion. The tax achievement rate was 111.2%, an increase of 9.4% compared with the previous year's tax revenues.
11. Tainan City Revenue Service Office  
In 2019, tax revenues were NT\$26.9 billion, exceeding the budget of NT\$25.6 billion by NT\$1.4 billion. The tax achievement rate was 105.3%, an increase of 2.8% compared with the previous year's tax revenues.
12. Kaohsiung City Revenue Service Office  
In 2019, tax revenues were NT\$42.4 billion, exceeding the budget of NT\$40.9 billion by NT\$1.5 billion. The tax achievement rate was 103.7%, an increase of 5% compared with the previous year's tax revenues.
13. Kinmen County Revenue Service Office  
In 2019, tax revenues were NT\$0.5 billion, less than the budget of NT\$0.5 billion by NT\$5 million. The tax achievement rate was 99%, a decrease of 3.4% compared with the previous year's tax revenues.
14. Lienchiang County Revenue Service Office  
In 2019, tax revenues were NT\$44 million, exceeding the budget of NT\$30 million by NT\$14 million. The tax achievement rate was 146.3%, an increase of 10.9% compared with the previous year's tax revenues.

### Collection performance of various national tax collection agencies in 2019

Units: NT\$100 million, %

| Items<br>Tax collection agencies                        | Budget in 2019<br>(1) | Tax revenues in 2019<br>(2) | Budget implementation                     |                                     | Comparison of tax revenues in 2018 and tax revenues in 2017 |                                     | Tax ratio |
|---|-----------------------|-----------------------------|---|-------------------------------------|---|-------------------------------------|-----------|
|   |                       |                             | Increase (decrease) number<br>(3)=(2)-(1) | Tax achievement rate<br>(4)=(3)/(1) | Tax revenues in 2018<br>(5)                                 | Growth rate<br>(6)= [(2)-(5)] / (5) |           |
| Total   | 21,916.52             | 23,474.77                   | 1,558.25                                  | 107.1                               | 22,668.88   | 3.6                                 | 100.0     |
| National Taxation Bureau of Taipei                      | 6,994.49              | 7,305.64                    | 311.15                                    | 104.4                               | 7,330.54  | -0.3                                | 31.1      |
| National Taxation Bureau of the Northern Area           | 5,889.95              | 6,209.61                    | 319.66                                    | 105.4                               | 5,627.61  | 10.3                                | 26.5      |
| National Taxation Bureau of the Central Area            | 2,695.52              | 2,916.97                    | 221.45                                    | 108.2                               | 2,907.90  | 0.3                                 | 12.4      |
| National Taxation Bureau of the Southern Area           | 962.08                | 1,345.02                    | 382.94                                    | 139.8                               | 1,268.70  | 6.0                                 | 5.7       |
| National Taxation Bureau of Kaohsiung                   | 1,858.94              | 1,988.08                    | 129.14                                    | 106.9                               | 1,984.82  | 0.2                                 | 8.5       |
| Tax collection agencies of each county/ city government | 734.50                | 787.88                      | 53.38                                     | 107.3                               | 766.72  | 2.5                                 | 3.4       |
| Taipei City Revenue Service Office                      | 726.17                | 746.41                      | 20.24                                     | 102.8                               | 718.15  | 3.9                                 | 3.2       |
| New Taipei City Revenue Service Office                  | 574.29                | 611.54                      | 37.25                                     | 106.5                               | 597.34  | 2.4                                 | 2.6       |
| Taoyuan City Revenue Service Office                     | 380.89                | 387.22                      | 6.33                                      | 101.7                               | 359.09  | 7.8                                 | 1.6       |
| Taichung City Revenue Service Office                    | 429.13                | 477.14                      | 48.01                                     | 111.2                               | 436.09  | 9.4                                 | 2.0       |
| Tainan City Revenue Service Office                      | 255.63                | 269.22                      | 13.59                                     | 105.3                               | 261.79  | 2.8                                 | 1.1       |
| Kaohsiung City Revenue Service Office                   | 409.46                | 424.48                      | 15.02                                     | 103.7                               | 404.43  | 5.0                                 | 1.8       |
| Kinmen County Revenue Service Office                    | 5.17                  | 5.12                        | -0.05                                     | 99.0                                | 5.30  | -3.4                                | 0.0       |
| Lienchiang County Revenue Service Office                | 0.30                  | 0.44                        | 0.14                                      | 146.3                               | 0.40  | 10.9                                | 0.0       |

Source: Yearbook of Financial Statistics, Republic of China 2019 and the database of the Ministry of Finance  
Illustration: 1. The financial enterprises business tax, health and welfare surcharge on tobacco, estate and gift and tobacco and alcohol tax are both included in the long-term service development fund.

2. Figures may not add up to the total due to rounding.

**Collection performance comparison of tax collection agencies of each county/  
city government in 2019**

Units: NT\$100 million, %

| Tax collection agencies                | Item | Budget in 2019 (1) | Tax revenues in 2019 (2) | Budget implementation                  |                                  | Comparison of tax revenues in 2018 and tax revenues in 2017 |                                | Tax ratio |
|--|------|--------------------|--------------------------|--|----------------------------------|---|--------------------------------|-----------|
|  |      |                    |                          | Increase (decrease) number (3)=(2)-(1) | Tax achievement rate (4)=(3)/(1) | Tax revenues in 2018 (5)                                    | Growth rate (6)= [(2)-(5)]/(5) |           |
| Total                                  |      | 734.50             | 787.88                   | 53.38                                  | 7.3                              | 766.72  | 2.8                            | 100.0     |
| Yilan County Revenue Service Office    |      | 59.14              | 57.65                    | -1.49                                  | -2.5                             | 58.52   | -1.5                           | 7.3       |
| Hsinchu County Revenue Service Office  |      | 89.03              | 100.93                   | 11.91                                  | 13.4                             | 96.51   | 4.6                            | 12.8      |
| Miaoli County Revenue Service Office   |      | 62.84              | 67.55                    | 4.71                                   | 7.5                              | 63.54   | 6.3                            | 8.6       |
| Changhua County Revenue Service Office |      | 114.17             | 124.52                   | 10.34                                  | 9.1                              | 125.71  | -0.9                           | 15.8      |
| Nantou County Revenue Service Office   |      | 42.37              | 46.00                    | 3.63                                   | 8.6                              | 44.22   | 4.0                            | 5.8       |
| Yunlin County Revenue Service Office   |      | 64.37              | 70.19                    | 5.82                                   | 9.0                              | 67.38   | 4.2                            | 8.9       |
| Chiayi County Revenue Service Office   |      | 35.06              | 41.05                    | 5.99                                   | 17.1                             | 39.52   | 3.9                            | 5.2       |
| Pingtung County Revenue Service Office |      | 67.45              | 73.44                    | 5.99                                   | 8.9                              | 68.25   | 7.6                            | 9.3       |
| Taitung County Revenue Service Office  |      | 14.72              | 16.02                    | 1.31                                   | 8.9                              | 16.26   | -1.5                           | 2.0       |
| Hualien County Revenue Service Office  |      | 37.63              | 40.84                    | 3.21                                   | 8.5                              | 40.34   | 1.2                            | 5.2       |
| Penghu County Revenue Service Office   |      | 4.86               | 5.36                     | 0.50                                   | 10.2                             | 5.53  | -3.2                           | 0.7       |
| Keelung City Revenue Service Office    |      | 37.81              | 35.52                    | -2.29                                  | -6.1                             | 32.99   | 7.7                            | 4.5       |
| Hsinchu City Revenue Service Office    |      | 77.73              | 76.57                    | -1.15                                  | -1.5                             | 76.83   | -0.3                           | 9.7       |
| Chiayi City Revenue Service Office     |      | 27.32              | 32.22                    | 4.91                                   | 18.0                             | 31.11   | 3.6                            | 4.1       |

Source: Yearbook of Financial Statistics, Republic of China 2019.

Explanation: Figures may not add up to the total due to rounding.

### III Comparison of the proportion of various taxes to internal revenue taxes

As far as the tax items of internal revenue taxes (including Financial Enterprises Business Tax, Education Surtax, Health and Welfare Surcharge on Tobacco and Long-term Service Development Fund) are concerned, the income tax for the year 2019 accounts for 49.5%, ranking first among all tax items, followed by the business tax at 18.1%. These two tax items total 67.6 %, more than half of internal revenue taxes. Among them, Income Tax has been in the leading position of all tax items for 10 years. The proportion of each tax item is shown in the table.

#### Proportion of various tax items to internal revenue taxes

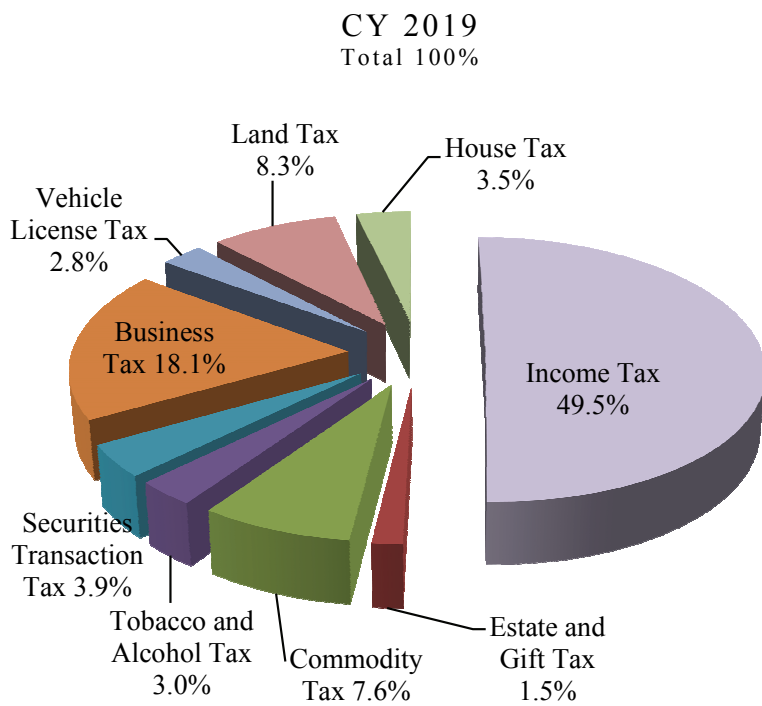
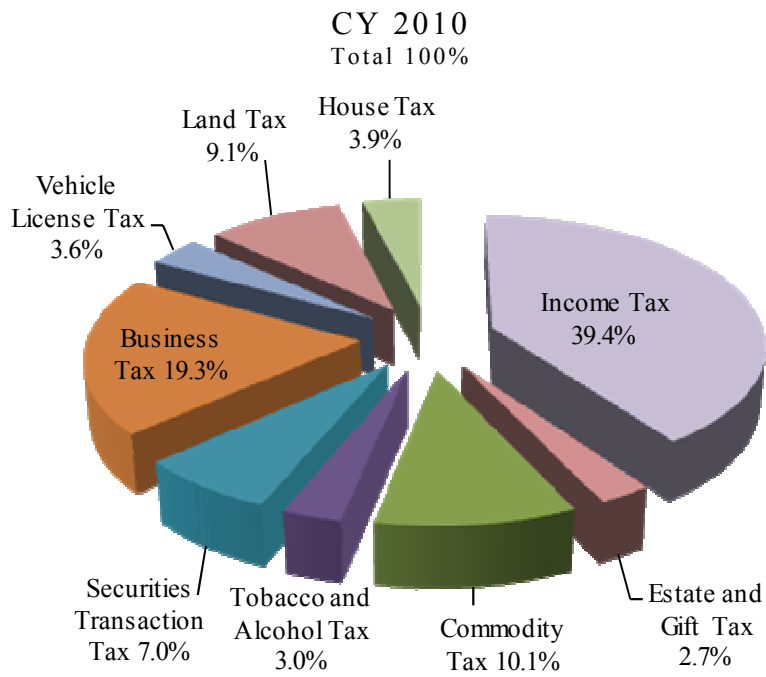
Unit: %

| Tax items                            |  | CY      |         |
|--------------------------------------|--|---------|---------|
|                                      |  | CY 2010 | CY 2019 |
| Total                                |  | 100.0   | 100.0   |
| National Taxes                       | <b>Subtotal</b>                              | 81.8    | 84.0    |
|                                      | Income Tax                                   | 39.4    | 49.5    |
|                                      | Estate and Gift Tax                          | 2.7     | 1.5     |
|                                      | Commodity Tax                                | 10.1    | 7.6     |
|                                      | Tobacco and Alcohol Tax                      | 3.0     | 3.0     |
|                                      | Securities Transaction Tax                   | 7.0     | 3.9     |
|                                      | Futures Transaction Tax                      | 0.3     | 0.2     |
|                                      | Business Tax                                 | 19.3    | 18.1    |
|                                      | Specifically Selected Goods and Services Tax | 0.0     | 0.1     |
| Municipality, County, and City Taxes | <b>Subtotal</b>                              | 18.2    | 16.0    |
|                                      | Stamp Tax                                    | 0.6     | 0.6     |
|                                      | Vehicle License Tax                          | 3.6     | 2.8     |
|                                      | Land Tax                                     | 9.1     | 8.3     |
|                                      | House Tax                                    | 3.9     | 3.5     |
|                                      | Amusement Tax                                | 0.1     | 0.1     |
|                                      | Deed Tax                                     | 0.9     | 0.6     |
|                                      | Special and Provisional Tax Levies           | 0.0     | 0.1     |

Source: Yearbook of Financial Statistics, Republic of China 2019.

Explanation : 1. Since 2014, both Specifically Selected Goods and Services Tax and Special and Provisional Tax Levies are included in tax revenues.

2. Figures may not add up to the total due to rounding.



**PART V Analysis of Tax Burden in Taiwan and Comparison  
with Other Countries**



## I Changes in tax revenue to gross domestic production and tax revenue to net expenditure of government

The standard for measuring the national tax burden is usually based on the ratio of tax revenue to the gross domestic product, the higher ratio meaning a higher tax burden. In the past 10 years, tax revenue as a percentage of net government expenditures and gross domestic product is provided as below.

Unit: %

| CY \ Items | Tax revenue as percentage of net government expenditures | Tax revenue as percentage of gross domestic product (GDP) |
|------------|--|---|
| 2010       | 61.0   | 11.5  |
| 2011       | 65.2   | 12.4  |
| 2012       | 64.7   | 12.2  |
| 2013       | 66.4   | 12.0  |
| 2014       | 72.5   | 12.2  |
| 2015       | 78.5   | 12.5  |
| 2016       | 78.9   | 12.7  |
| 2017       | 78.7   | 12.5  |
| 2018       | 80.8   | 13.0  |
| 2019       | ....   | 13.1  |

Source: Yearbook of Financial Statistics, Republic of China 2019.

## II Per Capita Tax Burden and Per Capita National Income

In the past 10 years, the average per capita national income has increased year by year. In 2019, the average per capita national income has been about NT\$687.1 thousand, the average per capita tax burden has been about NT\$104.7 thousand, and the average per capita tax burden has accounted for about 15.2% of the average per capita national income.

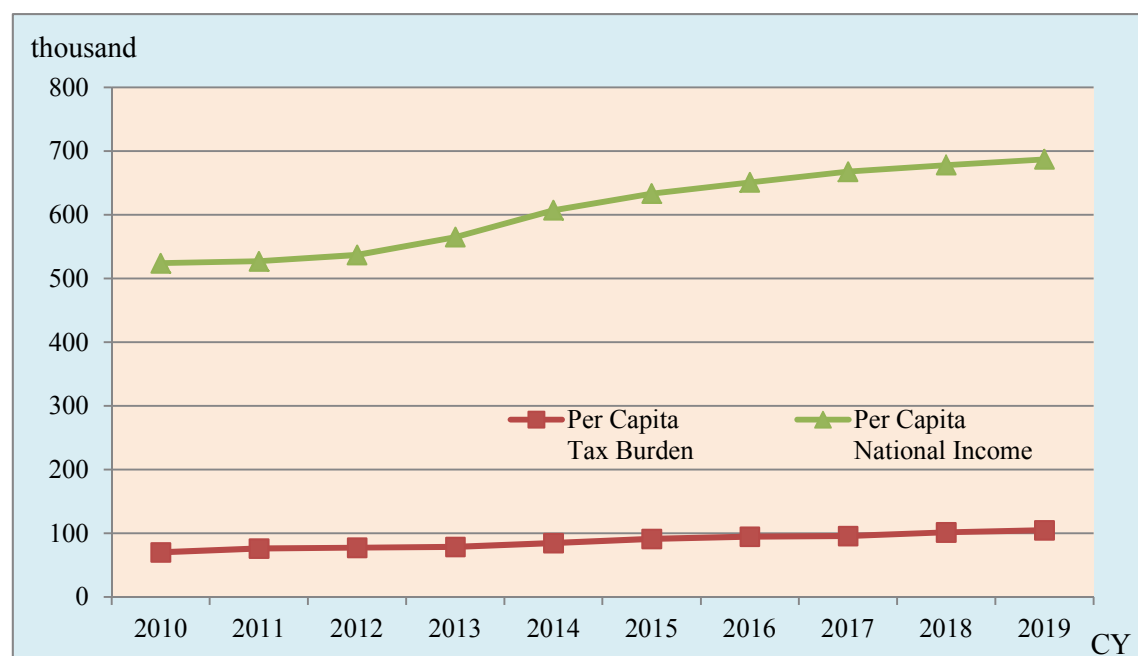
### Comparison of per capita tax burden and national income over the past 10 years

Units: NT\$1,000; %

| CY   | Per Capita Tax Burden | Per Capita National Income | Per capita tax burden as a percentage of per capita national income |
|------|-----------------------|----------------------------|---|
| 2010 | 70.1                  | 524.2                      | 13.4%   |
| 2011 | 76.1                  | 527.2                      | 14.4%   |
| 2012 | 77.2                  | 537.0                      | 14.4%   |
| 2013 | 78.6                  | 565.2                      | 13.9%   |
| 2014 | 84.5                  | 607.3                      | 13.9%   |
| 2015 | 91.0                  | 633.4                      | 14.4%   |
| 2016 | 94.6                  | 650.9                      | 14.5%   |
| 2017 | 95.6                  | 667.9                      | 14.3%   |
| 2018 | 101.3                 | 678.2                      | 14.9%   |
| 2019 | 104.7                 | 687.1                      | 15.2%   |

Source: Yearbook of Financial Statistics, Republic of China 2019 and website of The Directorate General of Budget, Accounting and Statistics (DGBAS).

“Summary of National Income Statistics”(Updated February 2019)



### III Comparison of national tax burden and other countries

According to tax revenue as a percentage of gross domestic product (GDP) in the Yearbook of Financial Statistics, Republic of China 2019, from 2015 to 2017, tax revenues accounted for 12.5%, 12.7%, and 12.5% of the gross domestic product. The percentages of other major countries are 18.9% in Japan, 20% in South Korea, 20.6% in the United States, 29.3% in France, and 23.3% in Germany, all higher than for the Republic of China (excluding Social Security Contributions).

#### Republic of China and other countries' tax revenues as a percentage of gross domestic product (GDP) in 2017

Unit: %

| Countries         | Tax revenue as a percentage of gross domestic product (GDP) |
|-------------------|---|
| Republic of China | 12.5  |
| Japan             | 18.9  |
| Korea             | 20.0  |
| United States     | 20.6  |
| France            | 29.3  |
| Germany           | 23.3  |

Source: Yearbook of Financial Statistics, Republic of China 2019.



## PART VI Analysis of Tax Sources



## I Income Tax

### 1. Percentage of Profit-Seeking Enterprise Income Tax and of Individual Income Tax

According to the theory of taxation, individual income tax has a higher capacity in achieving the ability-to-pay principle. Among the Organization for Economic Co-operation and Development (OECD) countries, the percentage of individual income tax in income tax is higher than that of profit-seeking enterprise income tax in most countries. The net tax revenue of income tax was NT\$1,148.81 billion in 2019 where individual income tax revenue was NT\$500.90 billion, 43.6% of total net income tax revenues, and profit-seeking enterprise income tax revenue was the remaining part of NT\$647.91 billion, 56.4% of total net income tax revenues.

#### Percentage of Profit-Seeking Enterprise Income Tax and of Individual Income Tax

Unit: NT\$1,000; %

| Year | Income Tax    | Individual Income Tax | Ratio | Profit-Seeking Enterprise Income Tax | Ratio |
|------|---------------|-----------------------|-------|--------------------------------------|-------|
| 2010 | 590,387,476   | 304,686,208           | 51.6  | 285,701,268                          | 48.4  |
| 2011 | 710,191,056   | 343,004,982           | 48.3  | 367,186,074                          | 51.7  |
| 2012 | 760,809,633   | 393,065,301           | 51.7  | 367,744,332                          | 48.3  |
| 2013 | 743,289,570   | 392,174,283           | 52.8  | 351,115,287                          | 47.2  |
| 2014 | 813,483,965   | 410,852,287           | 50.5  | 402,631,678                          | 49.5  |
| 2015 | 936,730,879   | 473,946,434           | 50.6  | 462,784,445                          | 49.4  |
| 2016 | 1,006,360,404 | 495,971,933           | 49.3  | 510,388,471                          | 50.7  |
| 2017 | 986,412,046   | 483,099,840           | 49.0  | 503,312,206                          | 51.0  |
| 2018 | 1,077,079,298 | 509,134,610           | 47.3  | 567,944,688                          | 52.7  |
| 2019 | 1,148,814,059 | 500,903,111           | 43.6  | 647,910,948                          | 56.4  |

Source: The Department of Statistics, Ministry of Finance.

### 2. Percentage of Publicly-Owned Profit-Seeking Enterprise Income Tax and of Private Profit-Seeking Enterprise Income Tax

The net tax revenue of profit-seeking enterprise income tax was NT\$647.91 billion in 2019 where publicly-owned profit-seeking enterprise income tax revenue was NT\$7.21 billion, 1.1% of total net profit-seeking enterprise income tax revenues and private profit-seeking enterprise income tax revenue was the remaining part of NT\$640.69 billion, 98.9% of total net profit-seeking enterprise income tax revenues. Therefore the main share of our profit-seeking enterprise income tax revenues is derived from private profit-seeking enterprises.

#### Percentage of Publicly-Owned Profit-Seeking Enterprise Income Tax and of Private Profit-Seeking Enterprise Income Tax

Unit: NT\$1,000; %

| Year | Profit-Seeking Enterprise Income Tax | Publicly-Owned | Ratio | Private     | Ratio |
|------|--------------------------------------|----------------|-------|-------------|-------|
| 2010 | 285,701,268                          | 3,339,381      | 1.2   | 282,361,887 | 98.8  |
| 2011 | 367,186,074                          | 3,131,884      | 0.9   | 364,054,190 | 99.1  |
| 2012 | 367,744,332                          | 4,499,172      | 1.2   | 363,245,160 | 98.8  |
| 2013 | 351,115,287                          | 6,142,700      | 1.7   | 344,972,587 | 98.3  |
| 2014 | 402,631,678                          | 842,960        | 0.2   | 401,788,718 | 99.8  |
| 2015 | 462,784,445                          | 4,883,296      | 1.1   | 457,901,149 | 98.9  |
| 2016 | 510,388,471                          | 1,117,891      | 0.2   | 509,270,580 | 99.8  |
| 2017 | 503,312,206                          | -9,440,483     | -1.9  | 512,752,689 | 101.9 |
| 2018 | 567,944,688                          | 7,091,410      | 1.2   | 560,853,278 | 98.8  |
| 2019 | 647,910,948                          | 7,213,163      | 1.1   | 640,697,785 | 98.9  |

Source: The Department of Statistics, Ministry of Finance.

### 3. Statistical Table of Profit-Seeking Enterprise Income Tax Returns and Tax Paid

Unit: Case; NT\$1,000

| National Taxation Bureau  | Year | Provisional Income Tax Returns and Tax Paid <sup>(Note)</sup> |             | Income Tax Returns |             |
|---|------|---|-------------|--------------------|-------------|
|   |      | Cases Filed   | Tax Paid    | Cases Filed        | Tax Paid    |
| National Taxation Bureaus of Northern, Central, and Southern Area | 2014 | 163,344   | 71,073,000  | 582,401            | 141,526,000 |
|   | 2015 | 170,474   | 89,759,000  | 599,002            | 137,586,000 |
|   | 2016 | 175,885   | 99,784,000  | 617,663            | 142,065,000 |
|   | 2017 | 179,821   | 114,655,000 | 634,959            | 149,119,000 |
|   | 2018 | 186,261   | 104,839,000 | 650,598            | 195,161,000 |
| National Taxation Bureau of Taipei                                | 2014 | 36,970  | 57,189,000  | 171,749            | 71,240,000  |
|   | 2015 | 38,863  | 62,151,000  | 175,909            | 72,706,000  |
|   | 2016 | 39,633  | 62,840,000  | 179,560            | 72,588,000  |
|   | 2017 | 39,924  | 65,618,000  | 183,510            | 109,898,000 |
|   | 2018 | 40,842  | 77,076,000  | 187,016            | 95,853,000  |
| National Taxation Bureau of Kaohsiung                             | 2014 | 28,551  | 8,941,000   | 91,021             | 16,234,000  |
|   | 2015 | 29,608  | 9,999,000   | 93,432             | 17,022,000  |
|   | 2016 | 30,550  | 12,778,000  | 95,730             | 15,970,000  |
|   | 2017 | 31,084  | 11,866,000  | 98,540             | 22,851,000  |
|   | 2018 | 32,105  | 15,279,000  | 100,909            | 30,278,000  |
| Total   | 2014 | 228,865   | 137,203,000 | 845,171            | 229,000,000 |
|   | 2015 | 238,945   | 161,909,000 | 868,343            | 227,314,000 |
|   | 2016 | 246,068   | 175,402,000 | 892,953            | 230,623,000 |
|   | 2017 | 250,829   | 192,139,000 | 917,009            | 281,868,000 |
|   | 2018 | 259,208   | 197,194,000 | 938,523            | 321,292,000 |

Sources:

1. Statistics of Income Tax Return of the National Taxation Bureau, Ministry of Finance on June 14, 2019.
2. Statistics of Provisional Tax Payments of the National Taxation Bureau, Ministry of Finance on November 9, 2018.

Note: According to article 67 and article 69 of the Income Tax revised on May 27, 2009, starting from 2009 a sole proprietorship or a partnership is exempted from making a provisional payment of tax and filing a provisional income tax return. Hence, only a profit-seeking enterprise organized in the form of a company or a cooperative shall make its provisional payment of tax and file its provisional income tax return. A profit-seeking enterprise which fulfills the provisional payment without investment tax credit, without refundable tax from administrative remedy, and without having claimed withholding tax is exempted from filing a provisional income tax return after making a provisional payment to the Treasury. Therefore, the cases listed in the above table include the cases where profit-seeking enterprises make provisional payments without filing provisional income tax returns as well as tax paid listed in the above table include tax payment collected from the aforesaid cases.

#### 4. Statistical Table of Individual Income Tax Returns and Tax Paid

Unit: Case; NT\$1,000

| National Taxation Bureau  | Year | Income Tax Return |             |
|---|------|-------------------|-------------|
|   |      | Cases Filed       | Tax Paid    |
| National Taxation Bureaus of Northern, Central, and Southern Area | 2014 | 4,515,358         | 86,690,000  |
|   | 2015 | 4,561,691         | 93,951,000  |
|   | 2016 | 4,626,975         | 92,143,000  |
|   | 2017 | 4,702,974         | 94,314,000  |
|   | 2018 | 4,704,248         | 89,408,000  |
| National Taxation Bureau of Taipei                                | 2014 | 876,522           | 77,289,000  |
|   | 2015 | 878,611           | 74,713,000  |
|   | 2016 | 882,501           | 75,602,000  |
|   | 2017 | 884,673           | 76,572,000  |
|   | 2018 | 877,158           | 76,518,000  |
| National Taxation Bureau of Kaohsiung                             | 2014 | 689,926           | 14,235,000  |
|   | 2015 | 696,106           | 13,084,000  |
|   | 2016 | 709,559           | 12,961,000  |
|   | 2017 | 717,833           | 13,582,000  |
|   | 2018 | 715,455           | 12,956,000  |
| Total   | 2014 | 6,081,806         | 178,214,000 |
|   | 2015 | 6,136,408         | 181,748,000 |
|   | 2016 | 6,219,035         | 180,706,000 |
|   | 2017 | 6,305,480         | 184,468,000 |
|   | 2018 | 6,296,861         | 178,882,000 |

Source: Statistics of the National Taxation Bureau, Ministry of Finance on June 28, 2019.

## 5. Individual Income Tax Structure Analysis

The national economy of our country is based on the Principle of People's Livelihood, which seeks to attain a well-balanced sufficiency in national welfare and people's livelihood. The assessment of Individual Income Tax is the best way to achieve this. Thus, we divided the structure of Individual Income Tax of 2017 into 3 points introduced below for reference.

- (1) A progressive tax rate system has been adopted for individual income tax, and tax distribution increases as income increases. With regard to the ratio of the assessed tax payable to assessed gross income, those with a net income of less than \$540,000 accounted for only 1.39%, while those with a net income of more than \$10.31 million amounted to 35.8%, as detailed in the attached table.

**Individual Income Tax Burden Distribution Table in 2017**

Unit: NT\$1,000; %

| Level | Brackets<br>(Ten Thousand) | Assessed Gross<br>Income | Assessed Net<br>Income | Assessed Tax Payable |   |
|-------|----------------------------|--------------------------|------------------------|----------------------|---|
|       |                            |                          |                        | Amount               | Percentage of<br>Assessed<br>Gross Income |
|       | NET=0                      | 859,623,645              | 0                      | 0                    | 0   |
| 1     | 0-54                       | 2,025,412,666            | 564,866,362            | 28,241,919           | 1.39                                      |
| 2     | 54-121                     | 1,188,767,222            | 626,838,177            | 40,317,769           | 3.39                                      |
| 3     | 121-242                    | 857,551,596              | 560,297,842            | 52,797,309           | 6.16                                      |
| 4     | 242-453                    | 451,323,957              | 343,253,673            | 49,827,841           | 11.04                                     |
| 5     | 453-500                    | 47,702,416               | 38,810,965             | 7,147,915            | 14.98                                     |
| 6     | 500-1031                   | 221,104,666              | 188,174,846            | 42,911,272           | 19.41                                     |
| 7     | 1031 and over              | 308,134,751              | 288,427,065            | 110,315,768          | 35.80                                     |
|       | Total                      | 5,959,620,919            | 2,610,668,931          | 331,559,793          | 5.56                                      |

Source: Fiscal Information Agency, Ministry of Finance, The 2017 statistical book of assessed individual income tax filing data (Table 6-2).

(2) Information based on the net income and tax payable of households shows that the percentage of taxation cases in the low income bracket is higher while the amount of tax paid is lower, whereas the percentage of taxation cases in the high income bracket is lower while the amount of tax paid accounts for a higher percentage. This is sufficient to illustrate the ability-to-pay principle of income taxation, as detailed in the attached table.

### Comparison Table of Taxpayer Unit and Tax Payable of Individual Income Tax in 2017

Unit: Case; NT\$1,000; %

| Brackets<br>(Ten Thousand) | Taxpayer Unit |            | Assessed Tax Payable |            |
|----------------------------|---------------|------------|----------------------|------------|
|                            | Cases Filed   | Percentage | Amount               | Percentage |
| 000-054                    | 5,042,012     | 79.82      | 28,241,919           | 8.52       |
| 054-242                    | 1,121,370     | 17.75      | 93,115,078           | 28.08      |
| 242 and over               | 153,706       | 2.43       | 210,202,796          | 63.40      |
| Total                      | 6,317,088     | 100.00     | 331,559,793          | 100.00     |

Source: Fiscal Information Agency, Ministry of Finance, The 2017 statistical book of assessed individual income tax filing data (Table 6-2).

(3) Income from salaries and wages is highest, followed by dividend income, as detailed in the attached table.

### Statistical Table of Income Categories of Individual Income Tax in 2017

Unit: Case; NT\$1,000; %

| Item of Income   | Income        | Percentage |
|--|---------------|------------|
| Business income  | 97,094,023    | 1.63       |
| Income from professional practice  | 127,915,950   | 2.15       |
| Income from salaries and wages   | 4,556,142,571 | 76.44      |
| Income from interest   | 232,779,372   | 3.91       |
| Income from leases and from royalties  | 128,697,801   | 2.16       |
| Income from self-undertaking in farming, fishing, animal husbandry, forestry, and mining | 0             | 0          |
| Income from property transactions  | 14,040,627    | 0.24       |
| Income from prizes and awards won by chance  | 6,625,709     | 0.11       |
| Dividend income  | 697,370,212   | 11.70      |
| Separation income  | 8,023,480     | 0.13       |
| Other income   | 70,707,027    | 1.19       |
| Income derived from written articles   | 1,546,541     | 0.03       |
| Non-classified income  | 19,683,193    | 0.33       |
| Total (Gross Income)   | 5,960,626,506 | 100.00     |

Source: Fiscal Information Agency, Ministry of Finance, The 2017 statistical book of assessed individual income tax filing data (Table 16-2).

### Statistical Table of Income Categories and Tax Brackets of Individual Income Tax in 2017

Unit: NT\$1,000

| Type of Income                              | Brackets (Ten Thousand) |                      |                      |                    |                    |                   |                    |                    |                      |
|---|-------------------------|----------------------|----------------------|--------------------|--------------------|-------------------|--------------------|--------------------|----------------------|
|   | NET=0                   | 0-54                 | 54-121               | 121-242            | 242-453            | 453-500           | 500-1031           | 1031 and over      | Total                |
| Taxpayer Unit                               | 2,294,445               | 2,747,567            | 782,047              | 339,323            | 107,848            | 8,166             | 28,046             | 9,646              | 6,317,088            |
| <b>Total</b>                                | <b>859,760,748</b>      | <b>2,025,550,156</b> | <b>1,188,956,652</b> | <b>857,774,750</b> | <b>451,519,291</b> | <b>47,720,892</b> | <b>221,207,222</b> | <b>308,136,795</b> | <b>5,960,626,506</b> |
| Business income                             | 27,023,410              | 29,480,266           | 16,305,443           | 10,884,548         | 4,840,825          | 433,344           | 2,100,242          | 6,025,945          | 97,094,023           |
| Income from professional practice           | 14,048,477              | 31,378,861           | 26,442,742           | 24,504,231         | 15,501,383         | 1,556,673         | 7,396,535          | 7,087,049          | 127,915,950          |
| Income from salaries and wages              | 665,888,790             | 1,714,106,976        | 964,159,085          | 655,142,473        | 311,800,076        | 31,008,288        | 128,515,060        | 85,521,824         | 4,556,142,571        |
| Income from interest                        | 67,586,160              | 77,485,038           | 39,696,410           | 26,064,128         | 12,399,185         | 1,128,567         | 4,708,356          | 3,711,528          | 232,779,372          |
| Income from leases and from royalties       | 17,654,484              | 33,733,585           | 25,052,006           | 22,355,231         | 14,460,583         | 1,554,635         | 7,613,825          | 6,273,452          | 128,697,801          |
| Income from property transactions           | 1,978,254               | 3,527,142            | 2,518,169            | 2,227,773          | 1,480,496          | 207,744           | 1,005,921          | 1,095,130          | 14,040,627           |
| Income from prizes and awards won by chance | 881,036                 | 2,448,947            | 1,484,147            | 1,066,612          | 529,932            | 42,429            | 137,075            | 35,532             | 6,625,709            |
| Dividend income                             | 55,510,477              | 113,204,386          | 98,207,478           | 100,239,879        | 77,837,145         | 10,018,856        | 59,572,583         | 182,779,408        | 697,370,212          |
| Separation income                           | 113,647                 | 333,773              | 627,554              | 1,138,168          | 1,273,794          | 225,612           | 1,561,830          | 2,749,101          | 8,023,480            |
| Other income                                | 6,294,509               | 15,692,877           | 11,353,195           | 10,958,560         | 9,135,560          | 1,200,235         | 6,763,164          | 9,308,927          | 70,707,027           |
| Income derived from written articles        | 212,512                 | 393,610              | 274,666              | 265,430            | 178,366            | 19,303            | 94,052             | 108,603            | 1,546,541            |
| Non-classified income                       | 2,568,992               | 3,764,696            | 2,835,756            | 2,927,718          | 2,081,946          | 325,206           | 1,738,580          | 3,440,298          | 19,683,193           |

Source: Fiscal Information Agency, Ministry of Finance, The 2017 statistical book of assessed individual income tax filing data (Table 16-2)

## II Commodity Tax

The net revenues of commodity tax were NT\$176.878 billion in 2019. That was about NT\$3.233 billion less than in 2018. Most of the revenue from commodity tax was concentrated from oil/gas and vehicles, accounting for 90.15%. Commodity tax revenues and the ratio for each taxable item are as follows:

### Comparative Analysis Table of Commodity Tax Sources in 2018 and 2019

Unit: NT\$1,000; %

| Item                | 2018              |             |        | 2019              |             |        |
|---------------------|-------------------|-------------|--------|-------------------|-------------|--------|
|                     | No. of businesses | Revenues    | Ratio  | No. of businesses | Revenues    | Ratio  |
| Total               | 1,110             | 180,111,430 | 100.00 | 1,105             | 176,878,186 | 100.00 |
| Oil / Gas           | 30                | 91,030,792  | 50.54  | 29                | 87,868,506  | 49.68  |
| Vehicles            | 467               | 70,757,547  | 39.29  | 470               | 71,579,242  | 40.47  |
| Electric Appliances | 266               | 9,197,608   | 5.11   | 262               | 8,051,783   | 4.55   |
| Cement              | 27                | 3,532,615   | 1.96   | 26                | 3,708,525   | 2.10   |
| Beverages           | 293               | 2,929,530   | 1.63   | 291               | 2,948,828   | 1.67   |
| Rubber Tires        | 24                | 2,255,944   | 1.25   | 24                | 2,316,716   | 1.31   |
| Flat-glass          | 3                 | 407,394     | 0.23   | 3                 | 404,586     | 0.23   |

Data source: The Department of Statistics, Ministry of Finance.

### III Tobacco and Alcohol Tax

1. The Tobacco and Alcohol Tax Act was implemented on January 1, 2002. Upon implementation, a tobacco and alcohol tax was imposed on tobacco and alcohol products regardless of whether they were manufactured domestically or imported from abroad. The taxable items and rates of the tobacco and alcohol tax are as follows:

- (1) Taxable tobacco products includes cigarettes, cut tobacco, cigars, and other tobacco products. Their corresponding tax rate is NT\$1,590 per 1,000 sticks or kilo.
- (2) Taxable alcohol products and their corresponding tax rates are as follows:
  - Brewed alcoholic beverages: Beer is NT\$26 per litre; other brewed alcoholic beverages are NT\$7 per litre per degree of alcohol content.
  - Distilled spirits: NT\$2.5 per litre per degree of alcohol content.
  - Reprocessed alcoholic beverages: Alcohol content exceeding 20% by volume is NT\$185 per litre; alcohol content less than 20% by volume is NT\$7 per litre per degree of alcohol content.
  - Cooking alcoholic beverages: NT\$9 per litre.
  - Other alcoholic beverages: NT\$7 per litre per degree of alcohol content.
  - Ethyl alcohol: NT\$15 per litre.

2. The net revenues of tobacco and alcohol tax were NT\$68.649 billion in 2019, with a decrease of more than NT\$0.953 billion compared to 2018. Revenues and ratio of tobacco and alcohol tax are as follows:

#### Net Revenues Comparative Table of Tobacco and Alcohol Tax in 2018 and 2019

Unit: NT\$1,000; %

| Item                    | 2018         |        | 2019         |        |
|-------------------------|--------------|--------|--------------|--------|
|                         | Net revenues | Ratio  | Net revenues | Ratio  |
| Tobacco and Alcohol Tax | 69,602,514   | 100.00 | 68,649,317   | 100.00 |
| Tobacco                 | 44,889,013   | 64.49  | 44,156,316   | 64.32  |
| Alcohol                 | 24,713,501   | 35.51  | 24,493,001   | 35.68  |

Data source: The Department of Statistics, Ministry of Finance.

## IV Business Tax

### 1. Analysis of the number of business entities and sales amount by industry

Value-added and non-value-added business tax shall be levied on the sale of goods or services within the territory of the Republic of China (R.O.C.) and the import of goods. There are 38 industries by business nature.

The top three industries in annual sales amount of 2019 are: trading, manufacturing, and contracting, accounting for 75.95% of total sales.

The number, sales amount and sales ratio of business entities by industry are as follows:

**Table of 2019 Sales Amount Filed by Business Entities by Industry**

Unit: NT\$1,000; %

| Industry                   | Number  | Sales amount   | Ratio | Industry                           | Number    | Sales amount   | Ratio  |
|----------------------------|---------|----------------|-------|------------------------------------|-----------|----------------|--------|
| Trading                    | 465,327 | 14,562,162,881 | 34.27 | Barber shops                       | 1,808     | 8,180,746      | 0.02   |
| Manufacturing              | 125,466 | 14,461,278,068 | 34.03 | Bathhouses                         | 68        | 583,200        | 0.00   |
| Handicraft                 | 36      | 220,736        | 0.00  | Labor service                      | 48,936    | 866,533,906    | 2.04   |
| Journalism                 | 1,619   | 71,926,190     | 0.17  | Warehousing                        | 1,046     | 135,181,755    | 0.32   |
| Publishing                 | 5,625   | 176,973,657    | 0.42  | Leasing                            | 20,108    | 608,557,313    | 1.43   |
| Agriculture and forestry   | 2,417   | 25,696,803     | 0.06  | Agency service                     | 8,402     | 189,855,156    | 0.45   |
| Animal husbandry           | 211     | 7,505,687      | 0.02  | Brokerage service                  | 19,064    | 795,910,799    | 1.87   |
| Aquaculture                | 755     | 13,161,832     | 0.03  | Technical and design service       | 41,483    | 1,090,226,425  | 2.57   |
| Mining                     | 1,168   | 74,086,754     | 0.17  | Food and beverage services         | 35,403    | 426,448,144    | 1.00   |
| Contracting                | 123,986 | 3,253,080,480  | 7.65  | Special food and beverage services | 407       | 1,324,348      | 0.00   |
| Printing                   | 6,862   | 146,495,809    | 0.34  | Notary public                      | 256       | 5,046,094      | 0.01   |
| Public utilities           | 3,530   | 1,391,126,176  | 3.27  | Banking                            | 5,414     | 1,442,970,740  | 3.40   |
| Entertainment services     | 4,551   | 74,804,614     | 0.18  | Insurance                          | 1,021     | 609,475,886    | 1.43   |
| Transport                  | 10,968  | 747,172,994    | 1.76  | Trust investment                   | 6,137     | 198,384,466    | 0.47   |
| Photo service              | 2,035   | 6,420,302      | 0.02  | Securities                         | 871       | 93,780,932     | 0.22   |
| Building furnishing        | 27,192  | 254,254,057    | 0.60  | Futures                            | 61        | 16,413,501     | 0.04   |
| Advertising                | 13,562  | 164,890,489    | 0.39  | Bills                              | 52        | 14,638,933     | 0.03   |
| Repair                     | 11,191  | 187,564,607    | 0.44  | Pawn-broking                       | 51        | 194,724        | 0.00   |
| Processing                 | 3,636   | 148,604,846    | 0.35  | Other                              | 2,300     | 70,019,294     | 0.16   |
| Lodging and accommodations | 4,579   | 156,937,921    | 0.37  | Total                              | 1,007,604 | 42,498,091,265 | 100.00 |

Source:

1. Fiscal Information Agency, MOF

2. Number of business entities based on the reporting period of November to December 2019.

## 2. Table of 2019 Business Tax Assessed by the Tax Authority

Unit: NT\$1,000; number

| Item   | Total       | National Taxation Bureau of Taipei | National Taxation Bureau of Kaohsiung | National Taxation Bureau of the Northern Area | National Taxation Bureau of the Central Area | National Taxation Bureau of the Southern Area |
|--|-------------|------------------------------------|---------------------------------------|---|--|---|
| Number of business entities whose business tax is assessed   | 252,379     | 31,161                             | 25,887                                | 90,443  | 62,106                                       | 42,782  |
| Number of business entities whose assessed sales amount is less than tax threshold   | 181,793     | 8,775                              | 29,744                                | 43,170  | 52,323                                       | 47,781  |
| Number of business entities whose business tax are assessed and exempted   | 62,441      | 6,873                              | 7,007                                 | 26,999  | 8,793  | 12,769  |
| Number of business entities whose assessed tax amount is less than tax threshold due to their input tax deducted from the assessed tax | 86          | 54                                 | 4                                     | 6   | 5  | 17  |
| Total  | 496,699     | 46,863                             | 62,642                                | 160,618                                       | 123,227                                      | 103,349                                       |
| Assessed sales amount  | 482,648,869 | 56,438,354                         | 53,220,594                            | 164,786,986                                   | 117,217,339                                  | 90,985,596                                    |
| Assessed tax amount  | 3,264,849   | 473,619                            | 330,252                               | 1,197,554                                     | 767,107                                      | 496,317                                       |
| Input tax filed to be deducted from the assessed tax amount  | 19,541      | 1,761                              | 1,579                                 | 9,053   | 4,446  | 2,702   |
| Input tax deducted from the assessed tax amount  | 19,195      | 1,504                              | 1,600                                 | 9,029   | 4,449  | 2,613   |
| Amount of business tax payable   | 3,245,655   | 472,115                            | 328,652                               | 1,188,526                                     | 762,658                                      | 493,704                                       |

Source:

1. Fiscal Information Agency, MOF
2. Number of assessed business entities based on 2019 Q4 figures.

### 3. Table of 2019 Business Tax Filed (2-1)

Unit: NT\$1,000; number

| Item  |                              | National Taxation Bureau | Total          | National Taxation Bureau of Taipei | National Taxation Bureau of Kaohsiung | National Taxation Bureau of the Northern Area | National Taxation Bureau of the Central Area | National Taxation Bureau of the Southern Area |            |
|---|------------------------------|--------------------------|----------------|------------------------------------|---------------------------------------|---|--|---|------------|
| Number of business entities filing business tax                                   |                              |                          | 1,007,604      | 195,736                            | 108,315                               | 344,695                                       | 243,313                                      | 115,545                                       |            |
| Sales amount  | Total                        |                          | 42,498,091,264 | 13,403,192,015                     | 4,614,248,364                         | 13,180,346,467                                | 7,953,482,235                                | 3,346,822,183                                 |            |
|   | 5%-tax-rate                  |                          | 27,177,082,697 | 8,825,927,384                      | 3,057,979,141                         | 7,805,039,894                                 | 5,179,917,360                                | 2,308,218,918                                 |            |
|   | Zero-tax-rate                |                          | 10,524,181,624 | 2,005,407,123                      | 1,189,475,495                         | 4,498,853,079                                 | 2,162,353,646                                | 668,092,281                                   |            |
|   | Tax-exempt                   |                          | 3,023,130,022  | 1,263,834,596                      | 291,872,643                           | 680,234,792                                   | 477,697,309                                  | 309,490,682                                   |            |
|   | Special-tax-rate             |                          | 1,773,972,437  | 1,308,367,452                      | 74,920,536                            | 196,183,088                                   | 133,497,381                                  | 61,003,980                                    |            |
| Tax base of imported goods and the payment amount of purchase of foreign services | Fixed assets                 |                          | 41,406,543     | 5,332,601                          | 3,746,022                             | 22,420,235                                    | 7,243,682                                    | 2,664,003                                     |            |
|   | Purchases                    |                          | 6,278,988,284  | 2,136,549,508                      | 1,160,935,234                         | 1,649,143,750                                 | 1,073,113,826                                | 259,245,966                                   |            |
|   | Purchase of foreign services |                          | 238,068,642    | 129,499,627                        | 9,787,826                             | 92,442,460                                    | 5,428,911                                    | 909,818                                       |            |
| Input   | Total                        |                          | 28,906,029,499 | 9,128,200,417                      | 3,676,216,345                         | 8,757,749,682                                 | 5,298,833,173                                | 2,045,029,882                                 |            |
|   | Creditable                   |                          | 26,442,711,552 | 8,847,313,306                      | 3,534,096,078                         | 7,463,437,615                                 | 4,679,597,671                                | 1,918,266,881                                 |            |
|   | Creditable input tax         | Purchases                |                | 1,291,668,807                      | 451,976,806                           | 172,158,910                                   | 358,208,739                                  | 220,490,270                                   | 88,834,082 |
|   |                              | Fixed assets             |                | 30,222,205                         | 10,534,376                            | 3,228,048                                     | 9,500,969                                    | 4,921,787                                     | 2,037,024  |

Source: Fiscal Information Agency, MOF  
(Supplementary tax declarations and payments not included)

### 3. Table of 2019 Business Tax Filed (2-2)

Unit: NT\$1,000; number

| National Taxation Bureau |   | Total         | National Taxation Bureau of Taipei | National Taxation Bureau of Kaohsiung | National Taxation Bureau of the Northern Area | National Taxation Bureau of the Central Area | National Taxation Bureau of the Southern Area |
|--------------------------|---|---------------|------------------------------------|---------------------------------------|---|--|---|
| Item                     |   |               |                                    |                                       |   |  |   |
| Calculation              | Total output taxes for current period                           | 1,359,379,327 | 529,332,662                        | 171,653,215                           | 345,391,431                                   | 218,502,715                                  | 94,499,305                                    |
|                          | Tax of the purchase of foreign services                         | 1,392,100     | 1,295,873                          | 70,992                                | 14,892  | 8,000  | 2,343   |
|                          | Tax calculated at special tax rate                              | 49,546,717    | 30,891,449                         | 3,079,624                             | 7,970,745                                     | 5,359,749                                    | 2,245,150                                     |
|                          | Payment of tax payable due to business suspension or adjustment | 1,258,671     | 747,970                            | 77,846                                | 281,819                                       | 104,572                                      | 46,464  |
|                          | Creditable input tax for current period                         | 1,306,638,921 | 457,366,529                        | 173,748,471                           | 364,590,738                                   | 222,493,680                                  | 88,439,503                                    |
|                          | Refundable tax due to business suspension or adjustment         | 629,816       | 188,473                            | 110,162                               | 52,688  | 246,266                                      | 32,227  |
|                          | Tax liability for current period                                | 374,184,473   | 158,798,125                        | 32,457,259                            | 97,785,771                                    | 58,715,516                                   | 26,427,802                                    |
|                          | Refundable tax for current period                               | 266,411,944   | 53,110,157                         | 32,089,163                            | 107,346,766                                   | 56,222,870                                   | 17,642,988                                    |
|                          | Accumulated input tax carried forward to next period            | 117,591,455   | 49,365,386                         | 11,604,126                            | 36,001,209                                    | 14,010,773                                   | 6,609,961                                     |

Source: Fiscal Information Agency, MOF

## V Stamp Tax

The items subject to the levy of stamp tax are receipts for monetary payments, deeds for sale of movables, contracting agreements, and contracts for the sale, transfer and partition of real estate.

### Stamp Tax Statistical Table

Unit: NT\$100 million; %

| Item  | 2018   |        | 2019   |        |
|---|--------|--------|--------|--------|
|   | Amount | %      | Amount | %      |
| Total   | 121.56 | 100.00 | 128.70 | 100.00 |
| Tax stamps  | 11.62  | 9.56   | 10.35  | 8.04   |
| Amount of collective or large payment of Stamp Tax            | 109.94 | 90.44  | 118.35 | 91.96  |
| Banking business and trust enterprise                         | 25.74  | 21.18  | 27.15  | 21.10  |
| Insurance enterprise  | 16.26  | 13.38  | 16.20  | 12.59  |
| Public utilities  | 0.78   | 0.64   | 0.96   | 0.75   |
| Contracting agreements  | 24.14  | 19.86  | 28.17  | 21.89  |
| Contracts for the sale, transfer, or partition of real estate | 20.20  | 16.62  | 22.44  | 17.43  |
| Other   | 22.81  | 18.76  | 23.42  | 18.20  |

Data Source: Revenue Service Office

## VI Land Tax

### 1. Analysis of Land Tax Revenues in Recent 10 Years

Analysis of land tax revenues (consisting of agricultural land tax, land value tax, and land value increment tax) is as follows:

- (1) Agricultural Land Tax: The levying of the agricultural land tax has been suspended since 1987.
- (2) Land Value Tax: The reasons for the increase in revenues for land value tax year by year are mainly the reassessment of land value in accordance with the laws in 2010, 2013, and 2016. In view of the long-term low base of the land value tax in the past, the adjustment of announced land value (30.54%) in 2016 was higher than for previous years. After that, the land value was reassessed in 2018, and the national average was 3.63% lower than for the previous year. The revenue of land value tax in 2018 was 91.9 billion NT dollars, a decrease of 3.1% from that revenue in 2017. The revenue of land value tax in 2019 was 91.9 billion NT dollars.
- (3) Land Value Increment Tax: Faced with the global financial crisis in 2009, the land transaction volume was greatly reduced. Starting from 2010, the transaction volume gradually grew, and the assessed present value of land increased year by year. The revenue in 2019 was 101.1 billion NT dollars, an increase of 12% compared to 2018.

#### Statistics of Land Tax Revenues in Recent 10 Years

Base Year: 2010

Unit: NT\$1,000; %

| Item<br>Year | Grand Total |            |            | Agricultural Land Tax |            |            | Land Value Tax |            |            | Land Value Increment Tax |            |            |
|--------------|-------------|------------|------------|-----------------------|------------|------------|----------------|------------|------------|--------------------------|------------|------------|
|              | Amount      | Proportion | Base Ratio | Amount                | Proportion | Base Ratio | Amount         | Proportion | Base Ratio | Amount                   | Proportion | Base Ratio |
| 2010         | 136,356,984 | 100        | 100.0      | 0                     | 0          | 0          | 63,044,266     | 46.2       | 100.0      | 73,312,718               | 53.8       | 100.0      |
| 2011         | 141,981,922 | 100        | 104.1      | 0                     | 0          | 0          | 63,374,107     | 44.6       | 100.5      | 78,607,815               | 55.4       | 107.2      |
| 2012         | 143,848,851 | 100        | 105.5      | 0                     | 0          | 0          | 62,712,169     | 43.6       | 99.5       | 81,136,682               | 56.4       | 110.7      |
| 2013         | 174,080,706 | 100        | 127.7      | 0                     | 0          | 0          | 70,826,019     | 40.7       | 112.3      | 103,254,687              | 59.3       | 140.8      |
| 2014         | 173,174,512 | 100        | 127.0      | 0                     | 0          | 0          | 71,515,636     | 41.3       | 113.4      | 101,658,876              | 58.7       | 138.7      |
| 2015         | 184,598,397 | 100        | 135.4      | 0                     | 0          | 0          | 71,141,328     | 38.5       | 112.8      | 113,457,069              | 61.5       | 154.8      |
| 2016         | 177,273,904 | 100        | 130.0      | 0                     | 0          | 0          | 93,888,422     | 53.0       | 148.9      | 83,385,482               | 47.0       | 113.7      |
| 2017         | 188,638,208 | 100        | 138.3      | 0                     | 0          | 0          | 94,776,475     | 50.2       | 150.3      | 93,861,733               | 49.8       | 128.0      |
| 2018         | 182,436,812 | 100        | 133.8      | 0                     | 0          | 0          | 91,885,304     | 50.4       | 145.7      | 90,551,508               | 49.6       | 123.5      |
| 2019         | 193,033,959 | 100        | 141.6      | 0                     | 0          | 0          | 91,897,189     | 47.6       | 145.8      | 101,136,770              | 52.4       | 138.0      |

Source: 2019 Yearbook of Financial Statistics, Republic of China.

## 2.Land Value Tax

### Sources of Land Value Tax

Unit: Hectare; NT\$1,000

| CY<br>Location     | Regular Land     |         |               | Self-use Residence Land |        |               | Others           |        |               |
|--------------------|------------------|---------|---------------|-------------------------|--------|---------------|------------------|--------|---------------|
|                    | No. of<br>Houses | Area    | Land Value    | No. of<br>Houses        | Area   | Land Value    | No. of<br>Houses | Area   | Land Value    |
| 2014               | 4,684,330        | 101,494 | 3,356,639,561 | 3,067,181               | 26,529 | 2,227,524,879 | 29,100           | 46,303 | 993,759,019   |
| 2015               | 4,725,131        | 103,923 | 3,360,355,891 | 3,133,726               | 27,225 | 2,259,483,807 | 29,239           | 46,560 | 980,627,047   |
| 2016               | 4,762,682        | 105,070 | 4,409,934,994 | 3,294,323               | 28,638 | 3,031,682,819 | 31,206           | 46,523 | 1,266,696,291 |
| 2017               | 4,804,294        | 106,931 | 4,391,982,997 | 3,364,578               | 29,345 | 3,069,410,044 | 32,381           | 47,763 | 1,305,022,791 |
| 2018               | 4,832,069        | 108,586 | 4,254,779,813 | 3,449,496               | 30,101 | 2,992,630,267 | 32,743           | 47,627 | 1,304,594,839 |
| 2019               | 4,859,067        | 110,186 | 4,248,860,988 | 3,536,800               | 30,820 | 3,034,012,128 | 33,416           | 48,844 | 1,309,429,527 |
| Taipei City        | 385,611          | 2,322   | 1,283,727,032 | 515,780                 | 2,147  | 1,246,566,259 | 3,538            | 522    | 304,498,317   |
| New Taipei<br>City | 748,221          | 10,722  | 756,823,115   | 807,877                 | 3,215  | 547,128,205   | 4,875            | 3,686  | 132,960,567   |
| Taoyuan<br>City    | 438,699          | 9,925   | 353,712,299   | 383,518                 | 2,911  | 199,444,113   | 3,815            | 5,737  | 167,045,196   |
| Taichung<br>City   | 589,684          | 13,039  | 382,742,495   | 361,630                 | 3,891  | 172,416,254   | 3,907            | 5,914  | 114,177,045   |
| Tainan City        | 420,528          | 10,928  | 266,200,146   | 260,861                 | 3,568  | 160,698,867   | 3,835            | 5,335  | 81,385,357    |
| Kaohsiung<br>City  | 477,761          | 10,114  | 469,655,917   | 485,833                 | 3,883  | 340,026,966   | 3,102            | 7,380  | 239,178,722   |
| Taiwan<br>Province | 1,774,131        | 52,285  | 733,800,612   | 721,119                 | 11,186 | 367,533,625   | 10,246           | 20,153 | 269,760,003   |
| Fujian<br>Province | 24,432           | 851     | 2,199,371     | 182                     | 19     | 197,840       | 98               | 118    | 424,320       |

Source: 2019 Yearbook of Financial Statistics, Republic of China.

Explanation: Totals may not add up because of rounding.

### 3. Land Value Increment Tax

#### Sources of Land Value Increment Tax

Unit: Hectare; NT\$1,000

| CY<br>Location  | Transfer  |        | Present Value of<br>Transfer | Original Declared<br>Value After<br>Adjustment | Gross Amount of<br>Land Value<br>Increment |
|-----------------|-----------|--------|------------------------------|--|--|
|                 | Plots     | Area   |                              |  |  |
| 2014            | 1,353,659 | 35,951 | 1,894,529,624                | 1,055,797,034                                  | 861,069,626                                |
| 2015            | 1,229,972 | 32,761 | 1,931,526,932                | 1,030,908,868                                  | 917,890,703                                |
| 2016            | 1,003,491 | 25,379 | 1,587,956,926                | 833,645,359                                    | 764,942,206                                |
| 2017            | 1,074,284 | 25,942 | 1,697,529,328                | 901,426,190                                    | 806,709,227                                |
| 2018            | 1,114,620 | 23,884 | 1,794,770,069                | 996,761,070                                    | 816,262,285                                |
| 2019            | 1,181,992 | 24,496 | 2,059,329,103                | 1,154,571,434                                  | 938,433,935                                |
| Taipei City     | 87,090    | 248    | 409,955,163                  | 242,888,756                                    | 195,076,696                                |
| New Taipei City | 175,685   | 1,298  | 333,553,124                  | 178,196,563                                    | 152,755,099                                |
| Taoyuan City    | 139,844   | 1,713  | 245,172,233                  | 124,721,775                                    | 118,210,828                                |
| Taichung City   | 147,397   | 1,798  | 270,430,437                  | 138,220,990                                    | 131,682,590                                |
| Tainan City     | 132,552   | 3,165  | 175,294,801                  | 106,644,234                                    | 71,793,020                                 |
| Kaohsiung City  | 122,234   | 1,727  | 210,780,963                  | 114,950,539                                    | 98,212,275                                 |
| Taiwan Province | 372,587   | 14,451 | 409,528,400                  | 247,691,715                                    | 167,322,911                                |
| Fujian Province | 4,603     | 94     | 4,613,984                    | 1,256,862                                      | 3,380,517                                  |

Source: 2019 Yearbook of Financial Statistics, Republic of China.

Explanation: Totals may not add up because of rounding.

## VII House Tax

### Number of Houses, Area, and Current Value

Unit: Square Meter; NT\$1,000

| CY<br>Location  | Total               |               |                  | Residential Purpose    |               |                  | Business Purpose       |             |                  |
|-----------------|---------------------|---------------|------------------|------------------------|---------------|------------------|------------------------|-------------|------------------|
|                 | Number of<br>Houses | Area          | Current<br>Value | Number<br>of<br>Houses | Area          | Current<br>Value | Number<br>of<br>Houses | Area        | Current<br>Value |
| 2014            | 9,850,395           | 2,004,315,274 | 5,144,370,090    | 8,679,788              | 1,206,819,874 | 2,858,540,975    | 703,000                | 296,840,074 | 810,570,530      |
| 2015            | 10,078,122          | 2,046,305,205 | 5,477,260,512    | 8,872,369              | 1,238,923,651 | 3,009,032,187    | 725,202                | 286,188,704 | 894,395,146      |
| 2016            | 10,148,669          | 2,074,962,325 | 5,662,853,609    | 8,934,121              | 1,250,608,466 | 3,105,622,045    | 729,920                | 293,049,253 | 908,862,479      |
| 2017            | 10,280,163          | 2,139,005,285 | 6,001,820,513    | 9,039,990              | 1,272,749,199 | 3,291,134,886    | 745,038                | 300,851,908 | 951,360,977      |
| 2018            | 10,409,416          | 2,158,159,983 | 6,149,586,313    | 9,145,757              | 1,288,508,739 | 3,374,049,035    | 757,629                | 309,557,357 | 976,512,712      |
| 2019            | 10,530,987          | 2,196,129,361 | 6,392,581,000    | 9,246,894              | 1,306,446,918 | 3,502,826,426    | 772,052                | 316,862,898 | 1,011,862,617    |
| Taipei City     | 1,186,669           | 203,598,164   | 1,031,376,580    | 942,603                | 97,276,415    | 413,094,664      | 158,904                | 35,980,798  | 272,088,712      |
| New Taipei City | 1,876,768           | 296,662,253   | 1,106,507,257    | 1,638,260              | 187,559,172   | 713,685,746      | 164,966                | 46,340,377  | 149,129,504      |
| Taoyuan City    | 970,923             | 247,698,169   | 678,402,109      | 862,513                | 133,612,411   | 352,518,119      | 58,481                 | 40,877,298  | 100,751,306      |
| Taichung City   | 1,233,475           | 305,478,738   | 792,980,844      | 1,076,058              | 172,772,446   | 416,688,869      | 99,700                 | 49,372,691  | 110,959,986      |
| Tainan City     | 835,540             | 197,753,007   | 574,062,778      | 745,509                | 120,662,949   | 311,201,466      | 48,904                 | 26,629,941  | 85,586,807       |
| Kaohsiung City  | 1,221,331           | 252,986,549   | 820,005,522      | 1,100,209              | 155,781,144   | 489,338,023      | 68,544                 | 34,549,663  | 113,241,465      |
| Taiwan Province | 3,177,284           | 685,723,077   | 1,380,837,990    | 2,858,630              | 434,768,709   | 801,374,529      | 168,521                | 82,456,259  | 179,040,273      |
| Fujian Province | 28,997              | 6,229,403     | 8,407,921        | 23,112                 | 4,013,672     | 4,925,013        | 4,032                  | 655,870     | 1,064,565        |

Remarks: 1. Source: 2019 Yearbook of Financial Statistics, Republic of China.

2. Figures in Total columns contain Residential Purpose and Business Purpose, as well as Houses Used for Non-residential and Non-business Purpose and their 50% amount deductions.

3. Totals may not add up because of rounding.

## VIII Deed Tax

### Deed Taxes

Unit: Case; NT\$1,000

| CY<br>Location  | Total           |               | Deed Tax on a Sale |               | Deed Tax on a Creation of Dien |               | Deed Tax on an Exchange |               |
|-----------------|-----------------|---------------|--------------------|---------------|--------------------------------|---------------|-------------------------|---------------|
|                 | Number of Cases | Value of Deed | Number of Cases    | Value of Deed | Number of Cases                | Value of Deed | Number of Cases         | Value of Deed |
| 2014            | 406,723         | 216,775,477   | 336,688            | 186,282,776   | 3                              | 1,963         | 3,520                   | 11,479,681    |
| 2015            | 378,638         | 242,508,795   | 306,573            | 204,585,659   | 1                              | -             | 4,672                   | 17,635,982    |
| 2016            | 324,833         | 194,762,634   | 267,026            | 172,549,910   | 2                              | 26            | 3,807                   | 6,978,628     |
| 2017            | 345,777         | 227,154,742   | 287,360            | 205,023,921   | 3                              | 5,652         | 3,277                   | 5,874,834     |
| 2018            | 357,624         | 241,686,598   | 298,494            | 219,628,096   | 3                              | 1,193         | 4,163                   | 6,198,596     |
| 2019            | 381,484         | 266,363,499   | 321,119            | 240,228,582   | 2                              | 405           | 4,878                   | 10,691,374    |
| Taipei City     | 39,636          | 31,061,531    | 30,733             | 25,016,452    | -                              | -             | 1,402                   | 4,158,329     |
| New Taipei City | 75,133          | 61,747,193    | 63,896             | 55,113,801    | -                              | -             | 2,102                   | 4,039,626     |
| Taoyuan City    | 49,024          | 34,310,708    | 43,512             | 30,509,342    | 1                              | 170           | 681                     | 2,107,371     |
| Taichung City   | 52,761          | 32,431,516    | 45,834             | 30,254,981    | -                              | -             | 133                     | 108,375       |
| Tainan City     | 28,832          | 19,108,939    | 24,895             | 17,974,073    | -                              | -             | 92                      | 40,528        |
| Kaohsiung City  | 47,038          | 37,958,059    | 40,927             | 35,909,171    | -                              | -             | 131                     | 98,203        |
| Taiwan Province | 88,268          | 49,583,746    | 70,674             | 45,318,688    | 1                              | 235           | 337                     | 138,943       |
| Fujian Province | 792             | 161,808       | 648                | 132,072       | -                              | -             | -                       | -             |

| CY<br>Location  | Deed Tax on a Bestowal or a Donation |               | Deed Tax on a Partition |               | Deed Tax on a Possession |               |
|-----------------|--------------------------------------|---------------|-------------------------|---------------|--------------------------|---------------|
|                 | Number of Cases                      | Value of Deed | Number of Cases         | Value of Deed | Number of Cases          | Value of Deed |
| 2014            | 66,290                               | 18,944,359    | 222                     | 66,698        | -                        | -             |
| 2015            | 67,162                               | 20,164,531    | 229                     | 122,419       | 1                        | 204           |
| 2016            | 53,816                               | 15,162,761    | 182                     | 71,308        | -                        | -             |
| 2017            | 54,983                               | 16,151,664    | 152                     | 98,651        | 2                        | 20            |
| 2018            | 54,806                               | 15,406,747    | 157                     | 451,668       | 1                        | 298           |
| 2019            | 55,349                               | 15,295,226    | 133                     | 147,728       | 3                        | 185           |
| Taipei City     | 7,474                                | 1,876,000     | 27                      | 10,750        | -                        | -             |
| New Taipei City | 9,135                                | 2,593,767     | -                       | -             | -                        | -             |
| Taoyuan City    | 4,830                                | 1,693,824     | -                       | -             | -                        | -             |
| Taichung City   | 6,786                                | 2,034,633     | 8                       | 33,527        | -                        | -             |
| Tainan City     | 3,829                                | 1,087,439     | 16                      | 6,899         | -                        | -             |
| Kaohsiung City  | 5,963                                | 1,881,869     | 17                      | 68,816        | -                        | -             |
| Taiwan Province | 17,188                               | 4,097,956     | 65                      | 27,738        | 3                        | 185           |
| Fujian Province | 144                                  | 29,735        | -                       | -             | -                        | -             |

Remarks: 1. Source: 2019 Yearbook of Financial Statistics, Republic of China.

2. Totals may not add up because of rounding.

## IX Estate Tax

### Number of Estate Tax Declarations and Cases Verified as Taxation or Exemption

Unit: Case; NT\$1,000

| CY<br>Location  | No. of Deceased | No. of Declared | No. of Cases Verified<br>as Taxation or Exemption |           |
|-----------------|-----------------|-----------------|---|-----------|
|                 |                 |                 | Taxation  | Exemption |
| 2015            | 163,858         | 135,337         | 5,778   | 128,560   |
| 2016            | 172,405         | 141,204         | 6,471   | 133,262   |
| 2017            | 171,242         | 146,782         | 6,911   | 138,334   |
| 2018            | 172,784         | 154,744         | 7,407   | 145,931   |
| 2019            | 176,296         | 155,017         | 7,953   | 147,081   |
| Taipei City     | 18,026          | 18,485          | 2,475   | 15,585    |
| New Taipei City | 25,072          | 21,248          | 1,181   | 19,991    |
| Taoyuan City    | 13,198          | 12,102          | 624   | 11,411    |
| Taichung City   | 17,717          | 14,942          | 952   | 14,023    |
| Tainan City     | 15,470          | 15,280          | 536   | 14,911    |
| Kaohsiung City  | 21,821          | 17,505          | 636   | 16,857    |
| Taiwan Province | 64,138          | 54,719          | 1,522   | 53,604    |
| Fujian Province | 854             | 736             | 27  | 699       |

| CY<br>Location  | Cases Verified as Taxation |                         |                                 |
|-----------------|----------------------------|-------------------------|---------------------------------|
|                 | Taxable Estate Amount      | Deduction and Exemption | Net Amount of<br>Taxable Estate |
| 2015            | 322,016,839                | 177,497,366             | 144,519,473                     |
| 2016            | 447,889,278                | 205,305,211             | 242,584,067                     |
| 2017            | 441,314,927                | 237,543,825             | 203,771,102                     |
| 2018            | 450,140,549                | 235,800,278             | 214,340,271                     |
| 2019            | 450,076,284                | 212,336,186             | 237,740,098                     |
| Taipei City     | 166,453,429                | 52,973,100              | 113,480,329                     |
| New Taipei City | 62,660,179                 | 33,315,967              | 29,344,212                      |
| Taoyuan City    | 34,694,520                 | 19,635,757              | 15,058,763                      |
| Taichung City   | 50,849,124                 | 27,445,365              | 23,403,759                      |
| Tainan City     | 33,450,692                 | 18,362,395              | 15,088,297                      |
| Kaohsiung City  | 35,862,303                 | 18,663,316              | 17,198,987                      |
| Taiwan Province | 64,919,093                 | 41,071,192              | 23,847,901                      |
| Fujian Province | 1,186,944                  | 869,094                 | 317,850                         |

Source: 2019 Yearbook of Financial Statistics, Republic of China.

## X Gift Tax

### Number of Gift Tax Declarations and Cases Verified as Taxation or Exemption

Unit: Case; NT\$1,000

| CY<br>Location  | No. of Declared | No. of Cases Verified as Taxation<br>or Exemption |           |
|-----------------|-----------------|---|-----------|
|                 |                 | Taxation  | Exemption |
| 2015            | 206,773         | 20,016  | 192,997   |
| 2016            | 182,379         | 17,642  | 170,439   |
| 2017            | 192,481         | 17,386  | 181,938   |
| 2018            | 193,750         | 16,035  | 189,647   |
| 2019            | 191,676         | 16,517  | 184,303   |
| Taipei City     | 27,327          | 3,707   | 24,171    |
| New Taipei City | 26,122          | 2,573   | 24,323    |
| Taoyuan City    | 16,770          | 1,270   | 15,836    |
| Taichung City   | 21,641          | 2,313   | 21,329    |
| Tainan City     | 18,056          | 1,118   | 18,746    |
| Kaohsiung City  | 20,198          | 1,521   | 19,461    |
| Taiwan Province | 60,314          | 3,961   | 59,202    |
| Fujian Province | 1,248           | 54  | 1,235     |

| CY<br>Location  | Cases Verified as Taxation |            |                               |
|-----------------|----------------------------|------------|-------------------------------|
|                 | Taxable Gift Amount        | Exemption  | Net Amount of<br>Taxable Gift |
| 2015            | 188,470,401                | 50,965,121 | 137,505,280                   |
| 2016            | 291,721,265                | 43,460,068 | 248,261,197                   |
| 2017            | 329,089,835                | 43,814,303 | 285,275,532                   |
| 2018            | 124,212,981                | 38,706,822 | 85,506,159                    |
| 2019            | 126,366,107                | 40,890,504 | 85,475,603                    |
| Taipei City     | 43,919,427                 | 10,017,787 | 33,901,640                    |
| New Taipei City | 18,686,505                 | 6,552,302  | 12,134,203                    |
| Taoyuan City    | 7,537,076                  | 3,049,298  | 4,487,778                     |
| Taichung City   | 19,218,576                 | 5,731,176  | 13,487,400                    |
| Tainan City     | 6,971,551                  | 2,579,775  | 4,391,776                     |
| Kaohsiung City  | 9,900,214                  | 3,515,537  | 6,384,677                     |
| Taiwan Province | 19,935,547                 | 9,306,494  | 10,629,053                    |
| Fujian Province | 197,211                    | 138,135    | 59,076                        |

Source: 2019 Yearbook of Financial Statistics, Republic of China.

## XI Amusement Tax

Due to the increase in the number of amusement places, the revenue of amusement tax in 2019 was NT1.878 billion, NT0.1 billion more than in 2018.

### Analysis of Number of Amusement Places

Unit: Establishment; Case.

| CY<br>Location  | Number of Amusement Places |         |                             |                                 |               |         |
|-----------------|----------------------------|---------|-----------------------------|---------------------------------|---------------|---------|
|                 | Grand Total                | Cinemas | Music Halls、<br>Dance Halls | Golf Courses、<br>Driving Ranges | Claw Machines | Arcades |
| 2014            | 14,796                     | 138     | 86                          | 182                             | 1,738         | 2,149   |
| 2015            | 14,741                     | 142     | 86                          | 176                             | 2,035         | 2,001   |
| 2016            | 14,728                     | 146     | 82                          | 178                             | 2,356         | 1,947   |
| 2017            | 16,785                     | 148     | 76                          | 171                             | 4,181         | 1,839   |
| 2018            | 20,651                     | 143     | 74                          | 169                             | 8,213         | 1,723   |
| 2019            | 21,964                     | 145     | 74                          | 163                             | 9,784         | 1,684   |
| Taipei City     | 2,284                      | 34      | 24                          | 9                               | 674           | 56      |
| New Taipei City | 2,986                      | 22      | 3                           | 30                              | 1,651         | 49      |
| Taoyuan City    | 1,922                      | 8       | 10                          | 27                              | 1,050         | 62      |
| Taichung City   | 2,756                      | 19      | 18                          | 18                              | 1,540         | 180     |
| Tainan City     | 1,796                      | 11      | 4                           | 13                              | 793           | 355     |
| Kaohsiung City  | 2,433                      | 20      | 8                           | 14                              | 1,117         | 207     |
| Taiwan Province | 7,710                      | 29      | 7                           | 52                              | 2,943         | 768     |
| Fujian Province | 77                         | 2       | -                           | -                               | 16            | 7       |

| CY<br>Location  | Number of Amusement Place    |         |                |                 |                       |        |
|-----------------|------------------------------|---------|----------------|-----------------|-----------------------|--------|
|                 | Entertainment<br>Restaurants | MTV、KTV | Internet Cafes | Amusement Parks | Temp. Public<br>Shows | Others |
| 2014            | 114                          | 6,985   | 1,190          | 74              | 368                   | 1,772  |
| 2015            | 115                          | 6,772   | 995            | 96              | 399                   | 1,924  |
| 2016            | 120                          | 6,254   | 887            | 117             | 511                   | 2,130  |
| 2017            | 121                          | 6,229   | 753            | 138             | 651                   | 2,478  |
| 2018            | 109                          | 6,332   | 635            | 134             | 643                   | 2,476  |
| 2019            | 118                          | 6,212   | 547            | 135             | 561                   | 2,541  |
| Taipei City     | 45                           | 882     | 62             | 10              | 259                   | 229    |
| New Taipei City | 3                            | 656     | 84             | 36              | 32                    | 420    |
| Taoyuan City    | 3                            | 537     | 58             | 5               | 25                    | 137    |
| Taichung City   | 20                           | 579     | 52             | 6               | 62                    | 262    |
| Tainan City     | 8                            | 438     | 33             | 4               | 21                    | 116    |
| Kaohsiung City  | 19                           | 751     | 59             | 20              | 52                    | 166    |
| Taiwan Province | 20                           | 2,334   | 187            | 53              | 110                   | 1,207  |
| Fujian Province | -                            | 35      | 12             | 1               | -                     | 4      |

Source: 1. 2019 Yearbook of Financial Statistics, Republic of China.

2. The cases of Temp. Public Shows are the numbers for December 2019.

## XII Vehicle License Tax

### Number of Vehicles Arranged by Vehicle License Tax

Unit: Case

| CY<br>Location  | Grand Total |         | Small Passenger Vehicles |         |
|-----------------|-------------|---------|--------------------------|---------|
|                 | Taxable     | Exempt  | Taxable                  | Exempt  |
| 2014            | 7,617,819   | 138,615 | 6,214,867                | 135,471 |
| 2015            | 7,900,396   | 144,946 | 6,438,594                | 141,288 |
| 2016            | 7,986,191   | 142,043 | 6,478,050                | 138,112 |
| 2017            | 8,177,007   | 141,167 | 6,597,178                | 137,405 |
| 2018            | 8,338,476   | 140,844 | 6,698,652                | 136,607 |
| 2019            | 8,497,120   | 139,571 | 6,791,961                | 134,527 |
| Taipei City     | 982,591     | 14,598  | 819,377                  | 14,350  |
| New Taipei City | 1,104,462   | 15,728  | 875,018                  | 15,147  |
| Taoyuan City    | 834,628     | 12,469  | 683,498                  | 11,944  |
| Taichung City   | 1,136,241   | 16,390  | 930,099                  | 16,024  |
| Tainan City     | 706,002     | 10,671  | 564,552                  | 10,426  |
| Kaohsiung City  | 986,668     | 13,479  | 780,472                  | 13,173  |
| Taiwan Province | 2,725,571   | 53,875  | 2,120,509                | 51,330  |
| Fujian Province | 20,957      | 2,361   | 18,436                   | 2,133   |

| CY<br>Location  | Large Passenger Vehicles |        | Trucks    |        | Motorcycles |        |
|-----------------|--------------------------|--------|-----------|--------|-------------|--------|
|                 | Taxable                  | Exempt | Taxable   | Exempt | Taxable     | Exempt |
| 2014            | 35,216                   | 1,040  | 1,210,813 | 1,987  | 156,923     | 117    |
| 2015            | 37,244                   | 641    | 1,227,647 | 2,831  | 196,911     | 186    |
| 2016            | 37,005                   | 810    | 1,232,832 | 2,943  | 238,304     | 178    |
| 2017            | 36,074                   | 712    | 1,242,274 | 2,850  | 301,481     | 200    |
| 2018            | 32,883                   | 744    | 1,252,813 | 3,255  | 354,128     | 238    |
| 2019            | 33,001                   | 874    | 1,262,354 | 3,682  | 409,804     | 488    |
| Taipei City     | 9,369                    | 70     | 103,697   | 153    | 50,148      | 25     |
| New Taipei City | 2,182                    | 381    | 131,100   | 176    | 96,162      | 24     |
| Taoyuan City    | 200                      | 25     | 112,532   | 425    | 38,398      | 75     |
| Taichung City   | 4,520                    | 98     | 158,917   | 251    | 42,705      | 17     |
| Tainan City     | 2,877                    | 67     | 108,818   | 164    | 29,755      | 14     |
| Kaohsiung City  | 4,411                    | 19     | 155,559   | 266    | 46,226      | 21     |
| Taiwan Province | 9,436                    | 206    | 490,671   | 2,091  | 104,955     | 248    |
| Fujian Province | 6                        | 8      | 1,060     | 156    | 1,455       | 64     |

Source: 1. 2019 Yearbook of Financial Statistics, Republic of China.

2. The data for "exempt" mean the number of applications exempt from Vehicle License Tax.

## XIII Securities Transaction Tax

Securities transaction tax is a turnover tax that sellers of securities shall pay on each transaction at the following rates based on the transaction amount:

1. 3‰ for shares or share certificates embodying the right to shares issued by companies; 1.5‰ for day-trading stocks.
2. 1‰ for corporate bonds and other securities approved by the government.

### The Budget Amount and Net tax Revenues of Securities Transaction Tax of the last 10 years

Unit: NT\$100 million

| Year | Budget Amount | Net tax Revenues |
|------|---------------|------------------|
| 2010 | 1,220.00      | 1,045.74         |
| 2011 | 1,143.99      | 939.90           |
| 2012 | 1,265.00      | 719.40           |
| 2013 | 963.63        | 713.83           |
| 2014 | 871.17        | 887.11           |
| 2015 | 940.27        | 820.33           |
| 2016 | 888.18        | 708.55           |
| 2017 | 977.00        | 899.67           |
| 2018 | 991.56        | 1,011.71         |
| 2019 | 1,129.00      | 912.05           |

Data source: The Department of Statistics, Ministry of Finance

### Legislative History of Securities Transaction Tax Rates

| Effectivite Date | Legal Rates  | Applicable rates   |
|------------------|--|--|
| 1955.12.31       | 1‰   | 1‰   |
| 1960.10.1        | 1‰   | Suspended  |
| 1965.6.21        | 1.5‰   | 1.5‰   |
| 1971.8.20        | 1.5‰   | Suspended  |
| 1973.1.1         | 1.5‰   | 1.5‰   |
| 1978.1.1         | 1.5‰   | 1.5‰   |
| 1978.11.29       | 3‰   | 3‰   |
| 1985.6.24        | 3‰   | Suspended  |
| 1987.1.1         | 3‰   | 3‰   |
| 1989.1.1         | 3‰   | 1.5‰   |
| 1990.1.1         | 1. shares: 6 ‰<br>2. corporate bonds and other securities: 1‰  | 1. shares: 6 ‰<br>2. corporate bonds and other securities: 1‰  |
| 1993.2.1         | 1. shares: 3 ‰<br>2. corporate bonds and other securities: 1‰  | 1. shares: 3 ‰<br>2. corporate bonds and other securities: 1‰  |
| 2002.2.1         | 1. shares: 3 ‰<br>2. other securities: 1‰  | 1. shares: 3 ‰<br>2. other securities: 1‰  |
| 2010.1.1         | 1. shares: 3 ‰<br>2. other securities: 1‰  | 1. shares: 3 ‰<br>2. other securities: 1‰  |
| 2017.1.2         | 1. shares: 3 ‰<br>2. other securities: 1 ‰   | 1. shares: 3 ‰<br>2. other securities: 1 ‰   |
| 2017.4.28        | 1. stock day-trading through brokerage accounts: 1.5 ‰<br>2. stock sellings other than day-trading through brokerage accounts: 3 ‰<br>3. other securities: 1 ‰ | 1. stock day-trading through brokerage accounts: 1.5 ‰<br>2. stock sellings other than day-trading through brokerage accounts: 3 ‰<br>3. other securities: 1 ‰ |
| 2018.4.28        | 1. stock sellings other than day-trading: 3 ‰<br>2. day-trading of listed or OTC-listed stocks: 1.5 ‰<br>3. other securities: 1 ‰                              | 1. stock sellings other than day-trading: 3 ‰<br>2. day-trading of listed or OTC-listed stocks: 1.5 ‰<br>3. other securities: 1 ‰                              |

## XIV Futures Transaction Tax

The buying and selling parties of a futures transaction shall each pay transaction tax at the following rates:

- (1) Stock index and single stock futures contracts: Transaction tax is levied per transaction at a rate of not less than 0.0000125% and not more than 0.06%, based on the value of the futures contract. The current applicable tax rate, approved by the Executive Yuan is on April 1, 2013, has been reduced from 0.004% to 0.002% since.
- (2) Interest rate futures contracts: Transaction tax is levied per transaction at a rate of not less than 0.0000125% and not more than 0.00025% based on the value of the futures contract. As all products have been delisted.
- (3) Option contracts or option contracts on futures: Transaction tax is levied per transaction at a rate of not less than 0.1% and not more than 0.6%, based on the premium paid. The current applicable tax rate approved by the Executive Yuan is 0.1%.
- (4) Other futures contracts: Transaction tax is levied per transaction at a rate of not less than 0.0000125% and not more than 0.06%, based on the value of the futures contract. The current applicable tax rate approved by the Executive Yuan is at the following rates:

| Product                  | Current Applicable Rate |
|--------------------------|-------------------------|
| Gold futures             | 0.00025%                |
| Foreign exchange futures | 0.0001%                 |
| Oil futures              | 0.0005%                 |

**Table of Budget Amount and Net Tax Revenues**

Unit: NT\$1,000

| Year | Budget Amount | Net Tax Revenues |
|------|---------------|------------------|
| 2010 | 4,352,000     | 4,556,136        |
| 2011 | 4,821,000     | 5,859,643        |
| 2012 | 5,953,000     | 4,297,887        |
| 2013 | 5,953,000     | 2,669,191        |
| 2014 | 3,680,000     | 2,861,748        |
| 2015 | 2,249,000     | 3,783,497        |
| 2016 | 2,862,000     | 3,705,866        |
| 2017 | 4,004,000     | 4,190,423        |
| 2018 | 4,004,000     | 6,099,829        |
| 2019 | 6,150,000     | 4,694,563        |

Data Source :The Department of Statistics, Ministry of Finance

## XV The Specifically Selected Goods and Services Tax

1. The Specifically Selected Goods and Services Tax Act was implemented on June 1, 2011. A specifically selected goods and services tax is levied in accordance with the provisions of this Act, on the sale, manufacture, and import of specifically selected goods or the sale of specifically selected services within the territory of the Republic of China.
  - (1) The specifically selected goods regulated by this Act are the following:
    - a. Buildings and land: Any unit of a building and the share of land associated with the unit, or any urban land and industrial land in non-urban areas for which a construction permit may lawfully be issued, that has been held for a period of no more than 2 years. The Specifically Selected Goods and Services Tax Act ceased to apply on sale contracts of buildings and land effective from January 1, 2016.
    - b. Passenger cars, airplanes, helicopters, and ultra-light vehicles: With a selling price or taxable value of not less than NT\$3 million.
    - c. Yachts: Any yacht with a full length of not less than 30.48 meters.
    - d. Furniture, turtle shells, hawksbill, coral, ivory, furs, and their products: Any of the aforesaid items that has a selling price or taxable value of not less than NT\$500,000.
    - e. As used in this Act, "specifically selected services" means any membership rights with a selling price of not less than NT\$500,000, except when in the nature of a refundable deposit.
  - (2) The tax rate for the specifically selected goods and services tax is 10%, provided that the tax rate for the specifically selected goods of buildings and land is 15% if the holding period is no more than 1 year.
2. The net revenues of Specifically Selected Goods and Services Tax in 2019 were NT\$2.735 billion. The items, revenues, and ratios of the specifically selected goods and services tax are as follows:

### Net Revenues Statistics Table of Specifically Selected Goods and Services Tax in 2018 and 2019

Unit: NT\$1,000; %

| Item                               | 2018         |        | 2019         |        |
|------------------------------------|--------------|--------|--------------|--------|
|                                    | Net revenues | Ratio  | Net revenues | Ratio  |
| Total                              | 2,473,692    | 100.00 | 2,734,705    | 100.00 |
| Buildings and land                 | 83,982       | 3.39   | 10,509       | 0.38   |
| Passenger cars                     | 2,332,736    | 94.30  | 2,685,890    | 98.21  |
| Yachts                             | 9,027        | 0.36   | 3,371        | 0.12   |
| Airplanes                          | 1,659        | 0.07   | 408          | 0.01   |
| Conservation products              | 98           | 0.00   | 176          | 0.01   |
| Furniture                          | 6,643        | 0.27   | 8,961        | 0.33   |
| The specifically selected services | 39,547       | 1.60   | 25,390       | 0.93   |

Data source: The Department of Statistics, Ministry of Finance.



## PART VII Milestones



## Milestones

| Date     | event   |
|----------|---|
| 108.1.11 | The amendments to partial articles of “The Regulations Governing the Accounting Books and Vouchers of Profit-Seeking Enterprises managed by the Competent Tax Authorities” have been promulgated.   |
| 108.1.19 | “The Standards on Profit-Seeking Enterprises in the 2019 Taxable Year for the Ceiling Interest Rate on Loans and Standards on General Salary of Employees” has been issued.   |
| 108.1.21 | “The Essentials of the Implementation of the Expanding of Paper Examinations Relating to Profit-Seeking Enterprise Income Tax Returns for the 2018 Taxable Year” has been issued.   |
| 108.1.24 | The promulgation of “The Standards for Costs and Necessary Expenses from Leasing Property for the 2018 Taxable Year.”   |
| 108.1.24 | The promulgation of “The Standards for Costs and Necessary Expenses on Revenues from Self-Undertaking in Farming, Fishing, Animal Husbandry, and Forestry Businesses for the 2018 Taxable Year.”  |
| 108.1.25 | The amendments to partial articles of “The Guidelines for the Service of Pre-Calculation of Individual Consolidated Income Tax Returns” have been issued.   |
| 108.1.30 | The amendments to partial articles of “The Guidelines for Information Service Provided by the Tax Collection Authority on Income and Deductions Data Inquired by Taxpayers During the Period of Filing Income Tax Return” have been issued. |
| 108.2.12 | The amendments to partial articles of “The Guidelines for the Electronic Filing of Individual Consolidated Income Tax Returns” have been issued.  |
| 108.2.14 | The amendments to partial articles of “The Guidelines for the Electronic Filing of Individual Consolidated Income Tax Returns for Aliens” have been issued.   |
| 108.2.18 | The amendment on Article 8 of “The Guidelines for the Taxpayer Rights Protection Ombudsmen Dealing with Taxpayer Rights Protection Matters” has been issued.  |
| 108.2.19 | “The Guidelines for the Application of Exemption from Commodity Tax on Compressors Imported for Repair Purpose” has been issued.  |

|          |   |
|----------|---|
| 108.2.19 | “The Regulations Governing the Calculation of Income from Property Transactions for the Taxable Year 2018” has been issued.   |
| 108.2.19 | MOF notice is hereby given, for announcing certain articles to be exempted from “Electronic Signatures Act.”  |
| 108.2.20 | “The Pilot Guidelines for the Tax Collection Authority-in-Charge in Regard to Inquiring about the Income Data of Tax Year 2018 of Profit-Seeking Enterprises, Organizations or Institutions, and Offices of Professionals during the Period for the Filing of Income Tax Returns” has been issued.                        |
| 108.3.4  | “The Standards for Costs and Necessary Expenses for Private Cram Schools, Kindergartens, and Nursing Homes for the 2018 Taxable Year” have been issued.   |
| 108.3.4  | “The Standards for Expenses for Professional Practitioners for the 2018 Taxable Year” have been issued.   |
| 108.3.4  | “The Standards for Tax Authorities in Verifying the Revenue of Professional Practitioners for the 2018 Taxable Year” have been issued.  |
| 108.3.5  | “The notice of how to levy stamp tax for documents used in the banking industry” has been issued.   |
| 108.3.25 | The amendments to partial articles of “Operation Directions for Electronic-filing Returns of the Commodity Tax Act” have been issued.   |
| 108.4.1  | The amendments to Articles 5, 7 and 8 of “Directions for the Electronic Filing of Tobacco and Alcohol Tax Returns” have been issued.  |
| 108.4.2  | “The Standards for Calculating the Amount of Deduction for Contributions and Donations of Land Reserved for Public Facilities or Land Used by Government for Public Passage Made by Individuals for the 2018 Taxable Year” have been issued.  |
| 108.4.3  | The amendments to Articles 3 and 8 of “The Directions of the Ministry of Finance for the Rewarding of Business Entities that Issue Electronic Uniform Invoices”, and Articles 3 and 9 of “The Directions of the Ministry of Finance for the Rewarding of Business Entities that Issue Uniform Invoices” have been issued. |
| 108.4.8  | The amendments to “Regulations Governing Application of Investment Credit to Private Participation in Transportation Infrastructure Projects” have been issued.   |
| 108.4.15 | The amendments to Articles of “The Direction for Filing Profit-Seeking Enterprise Income Tax Returns via Electronic Media” have been issued.  |

|          |   |
|----------|---|
| 108.4.24 | “Operation Directions for Inter-departmental Declaration of Gift Tax” have been issued and become effective on 1 May 2019.  |
| 108.4.29 | The amendments to Articles 3 and Article 4 of “The Directions for Imposing Penalties on the Same Offense Involving the Application of Penalty Provisions Under the Vehicle License Tax Act and the Road Traffic Management and Penalty Act” have been issued.   |
| 108.5.13 | The amendments to Articles 9, 10 and 12 of “Directions on Investigation Procedure of the Tax Collection Authorities” have been issued.  |
| 108.5.23 | The amendments to partial Articles of “The Standards for the Exemption of Penalties for Inappropriate Actions in Taxation Affairs” have been issued.  |
| 108.5.24 | The amendment to Article 32 of the “Regulations Governing the Use of Uniform Invoices” has been issued.   |
| 108.6.10 | The amendments to “The Reference Table for Fines and Multiples of Punishments” of the Income Tax Act and the Income Basic Tax Act have been issued.   |
| 108.6.13 | “Regulations of Refunding Reduced Commodity Tax Amount in Purchasing Refrigerators, Air Conditioners and Dehumidifiers” have been issued.   |
| 108.6.13 | The amendments to the “Regulations of Reduced/Refund Commodity Tax for Newly Purchased Vehicle with Discard of Used Truck” and the renaming of the Regulations as “Regulations of Reduced/Refund Commodity Tax for Newly Purchased Truck with Discard of Old Truck” have been issued.                           |
| 108.6.13 | The amendments of Articles 11-1 and 12-6 of the “Commodity Tax Act” have been issued.   |
| 108.6.14 | “The Regulations of the Minimum Amount of Total Endowment Property to Establish a Foundation Supervised by the Ministry of Finance and the Specified Amount for the Total Property or Annual Revenue Required to be Audited and Certified by a Certified Public Accountant of the Foundation” have been issued. |
| 108.6.14 | “The Regulations Governing for management of the Foundations Supervised by the Ministry of Finance” has been abolished.   |
| 108.6.14 | “The Regulations Governing the Accounting Treatment and Preparation of Financial Reports for the Foundations Supervised by the Ministry of Finance” have been issued.   |
| 108.7.5  | The amendments to “The Guidelines for Electronic-filing of House Tax  |

|           |  |
|-----------|--|
|           | and Land Value Tax Return,” where its name was amended as “The Guidelines for Electronic-filing of House Tax, Land Value Tax and Vehicle License Tax” have been issued.  |
| 108.7.24  | “The Management, Utilization, and Taxation of Repatriated Offshore Funds Act” have been enacted.   |
| 108.7.24  | The amendments to Articles 14, 17 and 126 of the “Income Tax Act” have been promulgated.   |
| 108.8.13  | The amendments to “The Guidelines for Filing Profit-Seeking Enterprise Income Tax Provisional Returns through Electronic Media” have been issued.  |
| 108.8.15  | “Regulations Governing the Management, Utilization, and Taxation of Repatriated Offshore Funds” have been promulgated.   |
| 108.8.15  | MOF notice is hereby given, for announcing certain articles to be exempted from “Electronic Signatures Act” have been issued.  |
| 108.8.16  | The amendments to Articles 4 and 5 of “Directions for small business entities which accept mobile payment applying for the tax incentive measure” have been issued.  |
| 108.8.19  | The amendment to Article 10 of “The Guidelines for Electronic-Filing of Collective or Large Payment of Stamp Tax Return” has been issued and enforced on 1 August 2019.  |
| 108.9.9   | The amendments to Articles 3-1, 5 and 17 of “Uniform Invoice Award Regulations” have been issued.  |
| 108.9.20  | The amendments to partial articles of “Standards of Withholding Rates for Various Incomes” have been promulgated, and the provisions under Article 2 and Article 3 shall come into force on 1 December 2019.   |
| 108.9.26  | The “Directions for Foreign Profit-Seeking Enterprises Applying for Issuance of Assessment Permission of Applicable Net Profit Ratio and Domestic Profit Contribution Ratio for Calculation of Income from Sources in the Republic of China” have been issued. |
| 108.9.26  | The revision on Paragraph 15-1 of the “Guidelines for the Determination of Sources of Income in the Republic of China According to Article 8 of the Income Tax Act” has been issued.   |
| 108.10.9  | The amendments to Articles 6, 8 and 14 of the “Directions for the Electronic Filing of Individual Income Tax on House and Land Transaction” and will become effective on 1 January 2020.   |
| 108.10.17 | The amendments to partial Articles of the “Regulations for the Collection of Commodity Tax” have been issued.  |

|           |  |
|-----------|--|
| 108.10.22 | The amendments to the “Directions for examining and handling of applications regarding payment in kind such as creditor’s right, shares of companies limited by shares that are not listed on the Taiwan Stock Exchange or traded on the Over-the-Counter market, contributed capital of limited company, antiques, artworks, etc.” and the renaming of the Regulations as the “Directions for examining and handling of applications regarding payment in kind such as creditor’s right, shares, contributed capital, antiques, artworks, etc.” have been issued. |
| 108.10.28 | The amendments to partial articles of the “Regulations Governing the Application of Investment Credit to Urban Renewal Entities in the Form of a Company Limited by Shares Participating in the Renewal Projects of Urban Areas” have been issued, and these Regulations renamed the “Regulations Governing the Application of Investment Credit to Urban Renewal Entities and Assistant Implementers in the Form of a Company Limited by Shares Participating in the Renewal Projects of Urban Areas” has been promulgated.                                       |
| 108.11.4  | The amendment to Article 5 of the “Directions Regarding the Enterprises or Financial Institutions Applying for the Land Value Increment Tax Benefit, Which is Delaying Tax Payment Until Further Transfer of the Land” has been issued.  |
| 108.11.8  | “Regulations Governing Scope and Identification of Allowable Deductions of Necessary Expenses from Individual Salary and Wages” has been issued.   |
| 108.11.11 | “Operation Guidelines for Diversified Services of Uniform Invoice Redemption” has been issued, and shall become effective on 1 December 2019.  |
| 108.11.11 | The amendments to Article 3, 4 and 10 of the “Directions for Card Issuers of Credit Card and Debit Card Applying on Behalf of Cardholders for Specifying Those Cards of Cash Award Drawn from the Cloud Invoices” have been issued.  |
| 108.11.11 | The amendments to Article 1, 3, 7, Attachment 1 of Article 4 and Attachment 2 of Article 5 of the “Directions for Public Utilities Applying for Specifying Account for Remittance of Cash Award Drawn from the Cloud Invoices on Behalf of Their Customers” have been issued.  |
| 108.11.12 | The amendment to Article 3-2 of “The Standards for the Exemption of Penalties for Inappropriate Actions in Taxation Affairs” has been issued.  |

|           |   |
|-----------|---|
| 108.11.13 | The amendment to Article 5 of the “Uniform Invoice Award Regulations” has been issued.  |
| 108.11.15 | “Operation Directions for Cross-district Declaration of Estate Tax” has been issued, and shall become effective on 1 December 2019.   |
| 108.11.26 | “Regulations for rotation of tax officials at all levels” has been abolished.   |
| 108.11.29 | The amendments to Articles 7, 13 and 14 of the “Operation Directions for Electronic-filing Returns of Estate and Gift Tax” have been issued.  |
| 108.12.16 | “The Standards on Profit-Seeking Enterprises in the 2020 Taxable Year for the Ceiling Interest Rate on Loans and Standards on General Salary of Employees” has been issued.   |
| 108.12.19 | Notice is hereby given that the amounts of items listed in Paragraph 1, Article 12-1 of the Estate and Gift Tax Act are applicable to estate and gift tax cases occurring in 2020.  |
| 108.12.19 | Notice is hereby given concerning the amounts of exemptions, standard deductions, special deductions for salaries/wages and the disabled, tax brackets for individual income tax in 2020, and limited exemptions for retirement and severance payments received in 2020 have been announced.  |
| 108.12.19 | Notice is hereby given concerning the amounts of basic income, deduction from basic income while calculating the basic tax, and exemption for insurance payments received in the event of death for individual basic income under which profit-seeking enterprises and individuals are not liable for income tax in accordance with the Income Basic Tax Act in 2020 have been announced. |
| 108.12.20 | The amendments to “Directions for Electronic-filing of Amusement Tax Return” will become effective on 1 January 2020.   |
| 108.12.24 | The amendments to the “Regulations Governing Income Computation and Filing of Tax Incentives for Venture Capital Businesses of Limited Partnership” have been issued.   |
| 108.12.24 | Notice is hereby given concerning the amount of basic living expenses for an individual in 2019 have been announced.  |
| 108.12.25 | The amendments of Articles 12 of the “Commodity Tax Act” have been issued.  |

# YEARBOOK OF TAXATION, REPUBLIC OF CHINA

Publisher: Ministry of Finance

Website: <https://www.dot.gov.tw>

Editor: Taxation Administration, Ministry of Finance

Address: No.1, Lane 142, Sec. 6, Roosevelt Rd., Taipei City 116055, Taiwan, R.O.C

Tel: (02) 2322-8244 Website: <https://www.dot.gov.tw>

Date of Issue: September, 2020

Date of First Issue: March, 1989

Frequency: Annually

Website: [https://www.dot.gov.tw/multiplehtml/ch\\_55](https://www.dot.gov.tw/multiplehtml/ch_55)

Price: NT\$150

Sales office:

Government Publications Bookstore: 1F, No. 209, Sung Chiang Rd., Taipei, Taiwan

Website: <https://www.govbooks.com.tw> Tel: (02) 2518-0207

Wu-Nan Book Inc. : No. 6, Zhongshan Rd., Central Dist., Taichung City Taiwan

Website: <https://www.wunanbooks.com.tw> Tel: (04) 2226-0330

Design & Printing: Colonel Foundation., Ltd.

Address: No. 26, Ln. 88, Tonghua St., Sanmin Dist., Kaohsiung City 807, Taiwan

Taiwan (R.O.C.) Tel: (07) 311-6011

GPN: 2009502737

ISSN: 1812-1039

